



冷氣機

# 遙控器使用說明書

使用前請仔細閱讀本說明書  
將本說明書保存起來以備後用



## 目 錄

遙控器型號及主要參數.....	1
遙控器的處理.....	3
遙控器各按鈕功能.....	4
遙控器顯示屏介紹.....	8
如何使用基本功能.....	9
如何使用高級功能.....	12

### 注意：

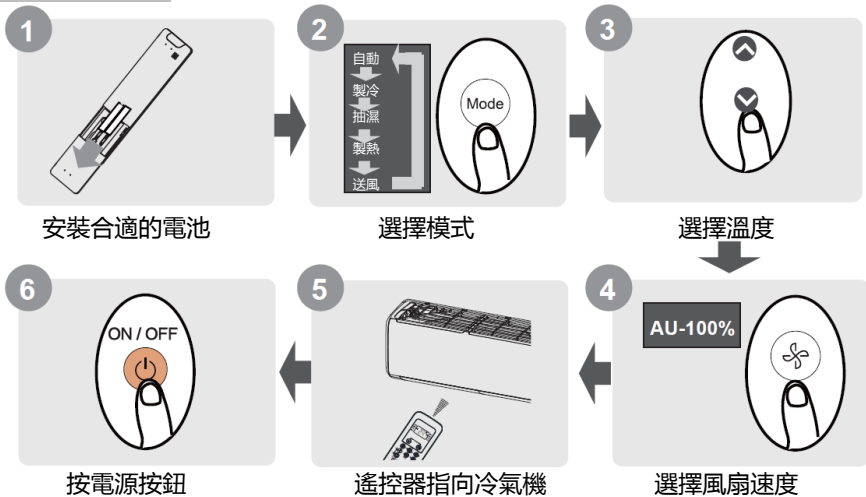
遙控器按鈕設計是基於典型的型號，可能與實際購買的樣式略有不同，以實際形狀為準。

描述的所有功能都由所購買的冷氣機完成。如果該冷氣機沒有此功能，按遙控器上的相關按鈕時，不會發生相應的動作。

## 遙控器型號及主要參數

型號	RG10A(E2S)/BGEF, RG10A(E2S)/BGEFU1, RG10A1(E2S)/BGEF, RG10A2(E2S)/BGEFU1, RG10A2(E2S)/BGCEFU1, RG10A2(E2S)/BGCEF, RG10A10(E2S)/BGEF, RG10B(E2)/BGEF, RG10B1(E2)/BGEF, RG10B2(E2)/BGCEF, RG10B10(E2)/BGEF
額定電壓	3.0V ( 兩節 R03/LR03 乾電池 )
信號到達距離	8m
使用條件	-5°C ~ 60°C(23°F~140°F)

## 快速入門指南



## 不確定功能是什麼？

有關如何使用冷氣機的詳細說明，請參閱本手冊的“如何使用基本功能”和“如何使用高級功能”部分。

## 特別說明

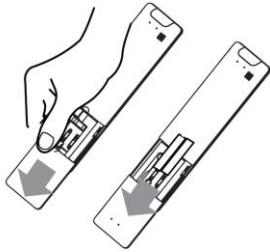
- 本機上的按鈕設計可能與所示示例略有不同。
- 如果室內機沒有特定功能，則按遙控器上的該功能按鈕將無效。
- 如果功能說明中的“遙控器手冊”和“用戶手冊”之間有很大差異，則以“用戶手冊”為準。

## 遙控器的處理

### 安裝和更換電池

您的冷氣機裝置可能隨附兩節電池（部分機型）。使用之前，請將電池放入遙控器中。

1. 從遙控器向下滑動後蓋，露出電池盒。
2. 插入電池，注意將電池的（+）和（-）末端與電池倉內的符號對齊。
3. 將電池蓋滑回原位。



### ！注意事項

- 不要混合不同類型的新舊電池或電池。
- 如果 2 個月或更長時間都不再使用遙控器，請取出電池。



### 電池處理

不要將電池作為未分類的城市垃圾處理。有關正確處理電池，請參閱當地法律。

### 使用遙控器的提示

- 必須在距冷氣機 8 米以內使用遙控器。
- 收到遙控信號時，冷氣機會發出蜂鳴聲。
- 窗簾，其他材料和直射的陽光會干擾紅外信號接收器。
- 如果遙控器停止使用超過 2 個月，請取出電池。

## 使用遙控器的注意事項

該設備可能符合當地國家法規。

- 在加拿大，它應符合 CAN ICES-3 (B) / NMB-3 (B) 的要求。
- 在美國，此設備符合 FCC 規則的第 15 部分。操作必須符合以下兩個條件：
  - (1) 本遙控器不會造成有害干擾，並且
  - (2) 本設備必須接受收到的任何干擾，包括可能導致意外操作的干擾。

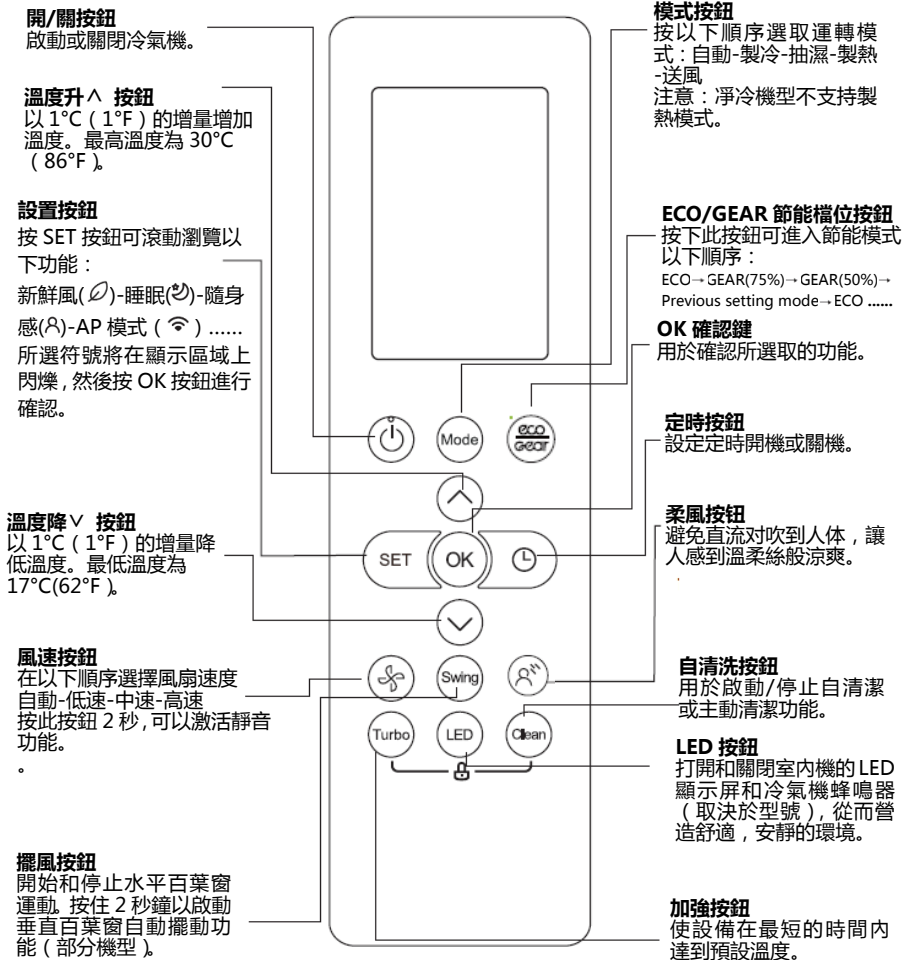
本設備經測試證明符合 FCC 規則第 15 部分中關於 B 類數字設備的限制。這些限制

設計用於在住宅安裝中提供合理的保護，以防止有害干擾。本設備會產生，使用並輻射射頻能量，如果未按照說明進行安裝和使用，可能會對無線電通信造成有害干擾。但是，不能保證在特定安裝中不會發生干擾。如果此設備確實對無線電或電視接收造成有害干擾（可以通過打開和關閉設備來確定），則鼓勵用戶嘗試通過以下一種或多種措施來消除乾擾：

- 重新調整或擺放接收天線。
- 增加設備和接收器之間的距離。
- 將設備連接到與接收器不同電路的插座上。
- 請諮詢經銷商或有經驗的廣播/電視技術人員以尋求幫助。
- 未經負責合規方批准的更改或修改可能會使用戶喪失操作設備的權限。

## 遙控器各按鈕功能

在開始使用新的冷氣機之前，請確保熟悉其遙控器。以下是遙控器本身的簡要介紹。有關如何操作冷氣機的說明，請參閱本手冊的“如何使用基本功能”部分。



型號：

RG10A2(E2S)/BGEFU1

RG10A10(E2S)/BGEF(20-28 C/68-82 F)

RG10A(E2S)/BGEF & RG10A(E2S)/BGEFU1(新鮮風功能不可用)

RG10A2(E2S)/BGCEFU1 & RG10A2(E2S)/BGCEF(淨冷遙控，自動模式和製熱模式不可用)

### 開/關按鈕

啟動或關閉冷氣機。

### 溫度升 ^ 按鈕

以 1°C (1°F) 的增量增加溫度。最高溫度為 30°C (86°F)。

### 設置按鈕

按 SET 按鈕可滾動瀏覽以下功能：

新鮮風 (🌿)-睡眠 (🌙)-隨身感 (A)-AP 模式 (📶).....  
所選符號將在顯示區域上閃爍，然後按 OK 按鈕進行確認。

### 溫度降 v 按鈕

以 1°C (1°F) 的增量降低溫度。最低溫度為 17°C (62°F)。

### 風速按鈕

在以下順序選擇風扇速度  
自動-低速-中速-高速  
按此按鈕 2 秒，可以激活靜音功能。

### 擺風按鈕

開始和停止水平百葉窗運動。按住 2 秒鐘以啟動垂直百葉窗自動擺動功能 (部分機型)。

### 模式按鈕

按以下順序選取運轉模式：  
自動-製冷-抽濕-製熱-送風  
注意：淨冷機型不支持製熱模式。

### ECO/GEAR 節能檔位按鈕

按下此按鈕可進入節能模式  
以下順序：  
ECO → GEAR(75%) → GEAR(50%) →  
Previous setting mode → ECO .....

### OK 確認鍵

用於確認所選取的功能。

### 定時按鈕

設定定時開機或關機。

### 新鮮風

用於啟動/關閉新鮮風功能。

### 自清洗按鈕

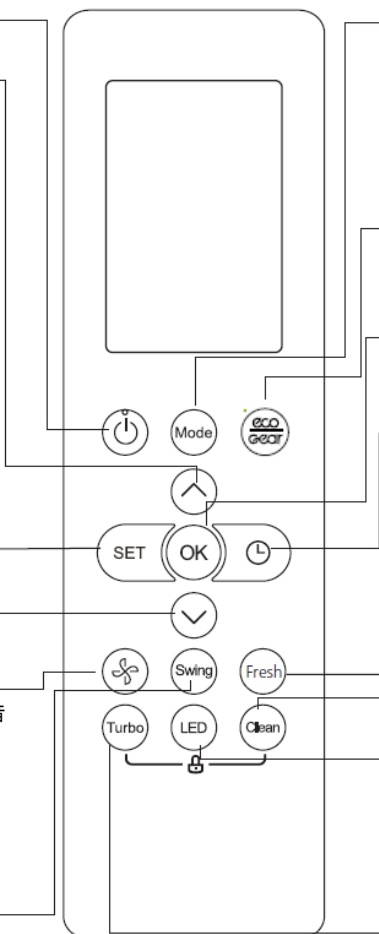
用於啟動/停止自清潔或主動清潔功能。

### LED 按鈕

打開和關閉室內機的 LED 顯示屏和冷氣機蜂鳴器 (取決於型號)，從而營造舒適，安靜的環境。

### 加強按鈕

使設備在最短的時間內達到預設溫度。



型號：

RG10A1(E2S)/BGEF

### 開/關按鈕

啟動或關閉冷氣機。

### 溫度升<sup>^</sup> 按鈕

以 1°C (1°F) 的增量增加溫度。最高溫度為 30°C (86°F)。

### 設置按鈕

按 SET 按鈕可滾動瀏覽以下功能：

新鮮風 (🌀) - 隨身感 (👤) - AP 模式 (📶) - 新鮮風 (🌀).....

所選符號將在顯示區域上閃爍，然後按 OK 按鈕進行確認。

### 溫度降<sup>v</sup> 按鈕

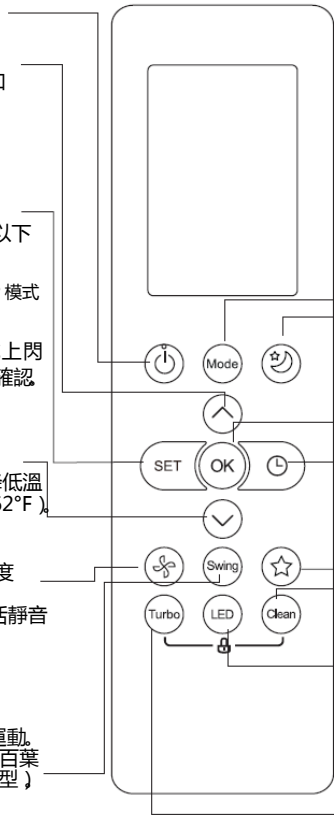
以 1°C (1°F) 的增量降低溫度。最低溫度為 17°C (62°F)。

### 風速按鈕

在以下順序選擇風扇速度：自動 - 低速 - 中速 - 高速。按此按鈕 2 秒，可以激活靜音功能。

### 擺風按鈕

開始和停止水平百葉窗運動。按住 2 秒鐘以啟動垂直百葉窗自動擺動功能 (部分機型)。



### 模式按鈕

按以下順序選取運轉模式：自動 - 製冷 - 抽濕 - 製熱 - 送風。  
注意：製熱僅適用熱泵機型。

### 睡眠功能

用於激活睡眠功能。在睡眠期間節約能源。

### OK 確認鍵

用於確認所選取的功能。

### 定時按鈕

設定定時開機或關機。

### 快捷方式

用於還原當前設置或恢復以前的設置。

### 自清潔

用於開啟/關閉自清潔功能。

### LED 按鈕

打開和關閉室內機的 LED 顯示屏和冷氣機蜂鳴器 (取決於型號)，從而營造舒適、安靜的環境。

### 加強按鈕

使設備在最短的時間內達到預設溫度。

型號：

RG10B(E2)/BGEF (清新功能不可用)

RG10B10(E2)/BGEF(20-28°C).

RG10B2(E2)/BGCEF (淨冷遙控，自動模式和製熱模式不可用)



### 開/關按鈕

啟動或關閉冷氣機。

### 溫度升 ^ 按鈕

以 1°C (1°F) 的增量增加溫度。最高溫度為 30°C (86°F)。

### 設置按鈕

按 SET 按鈕可滾動瀏覽以下功能：

隨身感 (A)-AP 模式 ( ) -

隨身感 (A).....

所選符號將在顯示區域上閃爍，然後按 OK 按鈕進行確認。

### 溫度降 v 按鈕

以 1°C (1°F) 的增量降低溫度。最低溫度為 17°C (62°F)。

### 風速按鈕

在以下順序選擇風扇速度  
自動-低速-中速-高速

按此按鈕 2 秒，可以激活靜音功能。

### 擺風按鈕

開始和停止水平百葉窗運動。按住 2 秒鐘以啟動垂直百葉窗自動擺動功能 (部分機型)。

### 模式按鈕

按以下順序選取運轉模式：自動-製冷-抽濕-製熱-送風

### 睡眠功能

用於激活睡眠功能。在睡眠期間節約能源。

### OK 確認鍵

用於確認所選取的功能。

### 定時按鈕

設定定時開機或關機。

### 新鮮風

用於啟動/關閉新鮮風功能。

### 自清洗按鈕

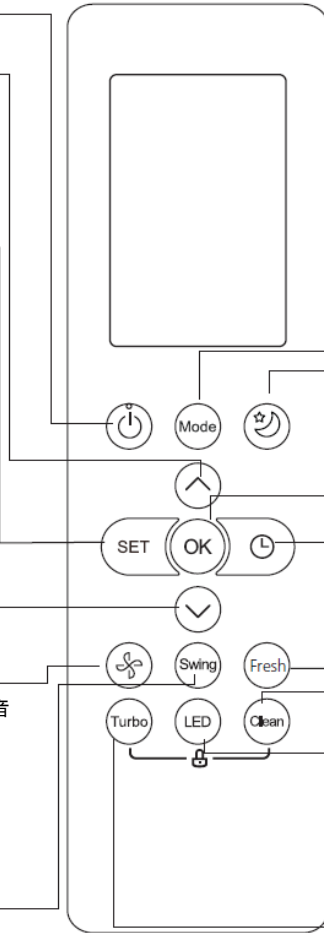
用於啟動/停止自清潔或主動清潔功能。

### LED 按鈕

打開和關閉室內機的 LED 顯示屏和冷氣機蜂鳴器 (取決於型號)，從而營造舒適，安靜的環境。

### 加強按鈕

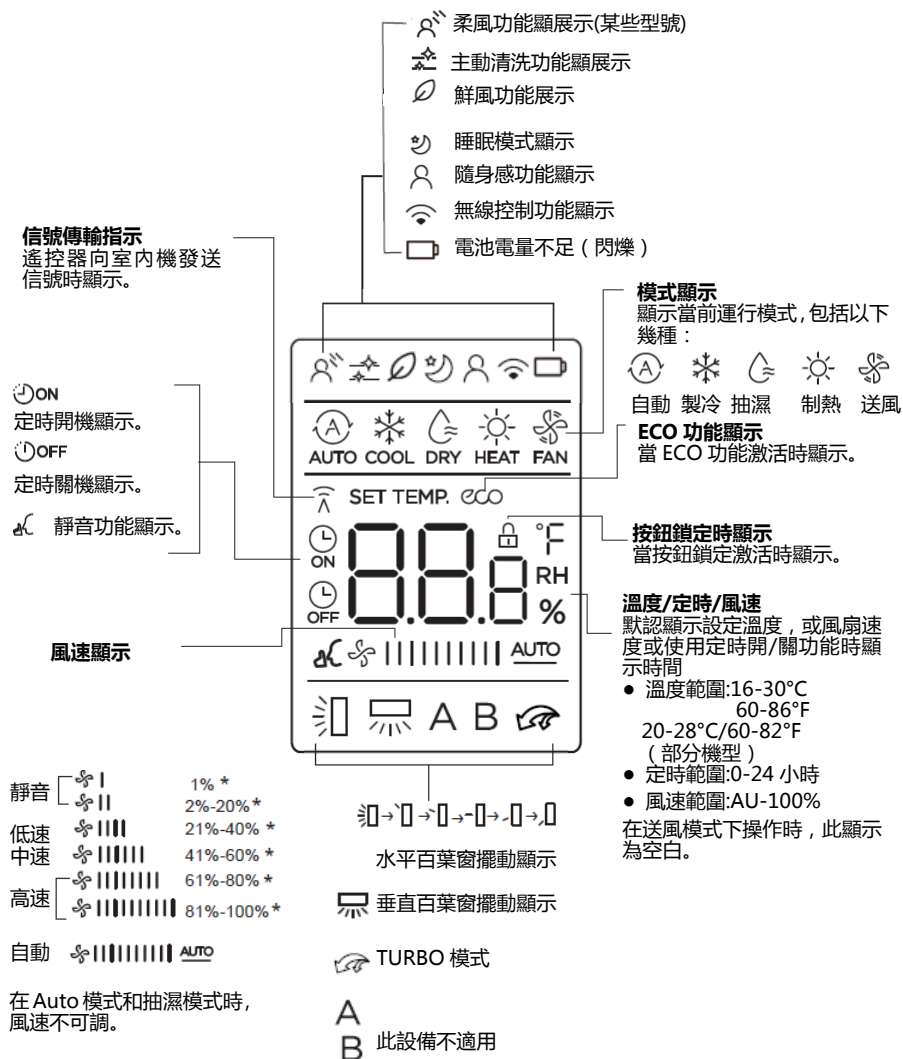
使設備在最短的時間內達到預設溫度。



適用型號：RG10B1(E2)/BGEF

## 遙控器顯示屏介紹

當初次安裝電池時，顯示屏會點亮所有信息。



注意：不是所有型號都能顯示風速值 AU-100%。

注意：圖中顯示的所有指標都是為了清楚表述。  
但是在實際操作期間，在顯示窗口中僅顯示相對功能符號。

## 如何使用基本功能

注意！在操作之前，請確保冷氣機已插入並接通電源。

### 自動模式

選擇 AUTO 模式



設置您希望的溫度



啟動冷氣機



注意：

- 1.在 AUTO 模式下，機器將會自動選擇製冷、送風和制熱功能設置的溫度。
- 2.在 AUTO 模式下，風速不可調節。

### 製冷或制熱模式

選擇製冷/制熱模式



設置您希望的溫度



設置風速



啟動冷氣機



**乾燥功能** 注意：在乾燥模式下已經自動控制，因此無法設置風速。

選擇乾燥模式



設置您希望的溫度



啟動冷氣機



**送風模式** 注意：在送風模式下不能設置溫度，因此在顯示屏上無顯示溫度。

選擇送風模式



設置風速



啟動冷氣機

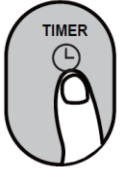


## 定時功能設置

定時開機/關機--設置冷氣機將自動打開/關閉的時間。

### 定時開機設置

按 **TIMER** 按鈕啟動開機時間序列。



按溫度調節上或下按鈕多次，以設置開啟冷氣機所需的時間。

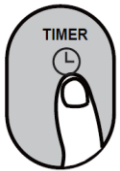


將遙控器指向冷氣機並等待 1 秒鐘，將激活定時開機功能。



### 定時關機設置

按 **TIMER** 按鈕啟動關機時間序列。



按溫度調節上或下按鈕多次，以設置關閉冷氣機所需的時間。



將遙控器指向冷氣機並等待 1 秒鐘，將激活定時關機功能。

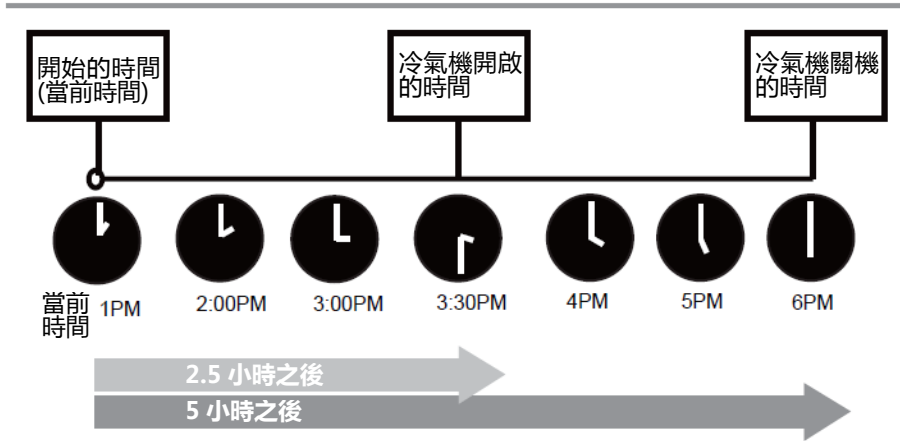
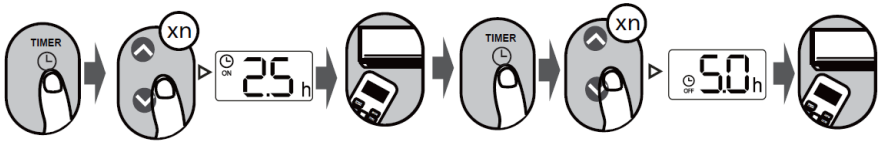


### 注意：

1. 設定 **TIMER ON** 定時開機或 **TIMER OFF** 定時關機時，每按一次，時間將增加 30 分鐘，最多增加 10 個小時。10-24 小時之間，它將以 1 小時為增量增加。（例如，按 5 次獲得 2.5h，然後按 10 次獲得 5h，）計時器將在 24 點後恢復為 0.0。
2. 通過將其計時器設置為 0.0h 來取消任一功能。

### 定時器開與關設置 ( 示例 )

請記住，為這兩個功能設置的時間段是指當前時間之後的小時數。

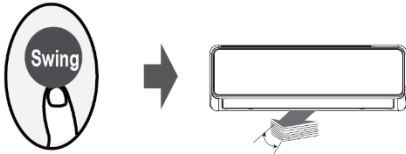


示例：如果當前計時器為 1:00 PM，則要按上述步驟設置計時器，本機將在 2.5h( 3:30 PM ) 之後打開，並在 6:00 PM 關閉。

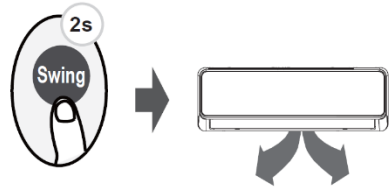
## 如何使用高級功能

### 擺風功能

按擺風 SWING 按鈕



按一下 **SWING 搖擺** 按鈕，水平百葉窗將自動上下搖擺。  
再按一次使其停止。



按住此按鈕 2 秒鐘以上，將激活垂直百葉窗擺動功能。(取決於型號)

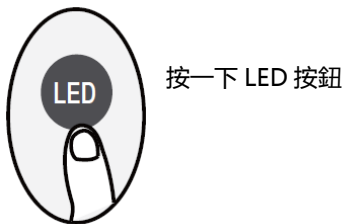
### 氣流方向



如果持續按下 SWING 按鈕，則可以設置五個不同的氣流方向。每次按下按鈕，百葉窗都可以在一定範圍內移動。按下按鈕，直到達到你想要的方向。

注意：關閉設備時，同時按住 MODE 和 SWING 按鈕一秒鐘，百葉窗將打開一定角度，這非常便於清潔。按下並按住不動按下 MODE 和 SWING 按鈕一秒鐘以重置百葉窗（取決於型號）。

### LED 顯示屏

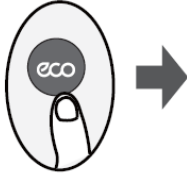


按下此按鈕可以打開和關閉室內機上的顯示屏。



按住此按鈕 5 秒鐘以上，室內機將顯示實際的室溫。再按 5 秒鐘以上將恢復顯示設定溫度。

## ECO/GEAR 節能檔位功能



按 ECO 按鈕以進入節能模式。

注意：此功能僅在製冷模式下有效。

### ECO 生態節能模式：

在製冷模式下，按此按鈕，遙控器會自動將溫度調節到 24°C/75°F，自動風扇速度，此狀態可以節省能量（但僅限設定溫度小於 24°C/75°F 時）。如果設定溫度高於 24°C/75°F，按 ECO 按鈕，風扇速度將變為自動，設定溫度將保持不變。

#### 注意：

按下 ECO 按鈕，修改模式或將設定溫度調節到 24°C / 75°F 以下將停止 ECO 操作。在 ECO 模式下，設定溫度應為 24°C / 75°F 或更高，這可能會導致冷卻不足。如果您感到不舒服，只需再次按 ECO 按鈕即可將其停止。

### GEAR 檔位操作模式：

按 ECO / GEAR 按鈕進入 GEAR 操作，如下所示：

75%（最多消耗 75% 的電能）



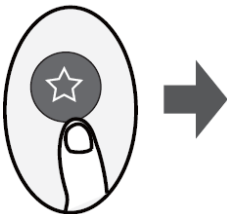
50%（最多消耗 50% 的電能）



先前的設定模式

在 GEAR 操作下，遙控器上的顯示將在電能消耗和設定溫度之間交替顯示。

### 按下快捷按鈕（部分機型）



當遙控器打開時，按此按鈕，系統將自動恢復到之前的設置，包括操作模式，設置溫度，風扇速度和睡眠功能（如果已激活）。

如果按下 2 秒鐘以上，系統將自動恢復當前的操作設置，包括操作模式，設置溫度，風扇速度級別和睡眠功能（如果已激活）。

## 靜音模式

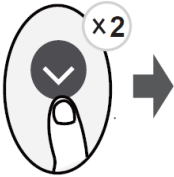


持續按住 **FAN 風扇** 按鈕 2 秒鐘以上以激活/禁用靜音功能（部分機型）。

由於壓縮機的低頻運行，可能會導致製冷和製熱能力不足。按開/關按鈕，模式按鈕，睡眠按鈕，強勁或清潔按鈕將取消靜音功能。

## FP 模式

在“加熱”模式下，將溫度設置為 16 C / 60 F 或 20 C / 68 F（對於 RG10A10 (E2S) / BGEF, RG10B10 (E2) / BGEF 型號），在一秒鐘內按此按鈕 2 次。



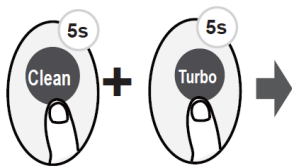
該冷氣機將以高風扇速度運行（在壓縮機開啟時），溫度自動設置為 8°C / 46°F。

注意：此功能僅適用於熱泵型冷氣機。

在製熱模式下，一秒內按此按鈕 2 次以激活 FP 功能，將溫度設置為 16°C / 60°F 或 20°C / 68°F（對於型號 RG10A10 (E2S) / BGEF, RG10B10 (E2) / BGEF）。

在操作過程中任意按開/關按鈕、睡眠模式、風扇或溫度按鈕將取消此功能。

## 鎖定按鈕

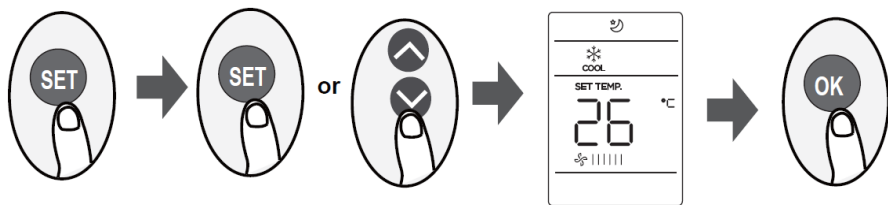


同時按下 **Clean 清潔** 按鈕和 **Turbo 增強** 按鈕 5 秒鐘以上以激活鎖定功能。

除了再次按下這兩個按鈕兩秒鐘以解除鎖定以外，所有按鈕都不會響應。



## SET 設置按鈕



- 按 **SET 按鈕** 進入功能設置，然後按 **SET 按鈕** 或 **TEMP ∨** 或 **TEMP ∧** 按鈕選擇所需的**功能**。所選符號將在顯示區域上閃爍，然後按 **OK 按鈕** 進行確認。

- 要取消選擇的功能，只需執行與上述相同的步驟即可。

- 按 **SET 按鈕** 可滾動瀏覽以下功能：

新鮮風 ( ) 睡眠 ( ) 隨身感 ( ) AP 模式 ( )

[ \* ] : 如果您的遙控器具有新鮮風 Fresh 按鈕或睡眠 SLEEP 按鈕，則無法使用 SET 按鈕選擇新鮮風 Fresh 或睡眠 SLEEP 功能。

**FRESH 鮮風功能** ( ) ( 部分機型 )

當鮮風功能啟動時，離子發生器/等離子除塵器 ( 取決於型號 ) 通電，有助於去除空氣中的花粉和雜質。

**Sleep 睡眠功能** ( )

睡眠功能用於減少睡眠時的能量消耗 ( 並且不需要相同的溫度設置以保持舒適 )。此功能只能通過遙控器激活。

有關詳細信息，請參閱“用戶手冊”中的“睡眠操作”。

注意：睡眠功能在 FAN 送風或 DRY 抽濕模式下不可用。

**AP 無線功能** ( ) ( 部分機型 )

選擇 AP 模式進行無線網絡配置 對於某些設備，按 SET 按鈕不起作用。要進入 AP 模式，請在 10 秒內連續按七次 LED 按鈕。

**Follow me 隨身感功能** ( )

隨身感功能使遙控器能夠測量當前遙控器位置的溫度，並每隔 3 分鐘將此信號發送到冷氣機。

冷氣機在自動，製冷或製熱模式時，通過遙控器 ( 而不是室內機本身 ) 測量環境溫度將使冷氣機能夠優化您周圍的溫度並確保最大的舒適度。

注意：按住 **Turbo 增強** 按鈕七秒鐘以啟動 / 停止“隨身感”功能的記憶功能。

- 如果激活了記憶功能，則“ON”將在屏幕上顯示 3 秒鐘。
- 如果記憶功能停止，“OF”將在屏幕上顯示 3 秒鐘。
- 激活記憶功能後，按開/關按鈕，切換模式或斷電不會取消“隨身感”功能。

設計和規格如有更改，恕不另行通知。  
有關詳細信息，請諮詢銷售代理商或製造商。



**REMOTE CONTROLLER**

# **OWNER'S MANUAL**

**IMPORTANT NOTE:**

Thank you for purchasing our air conditioner. Please read this manual carefully before operating your new air conditioning unit. Make sure to save this manual for future reference.



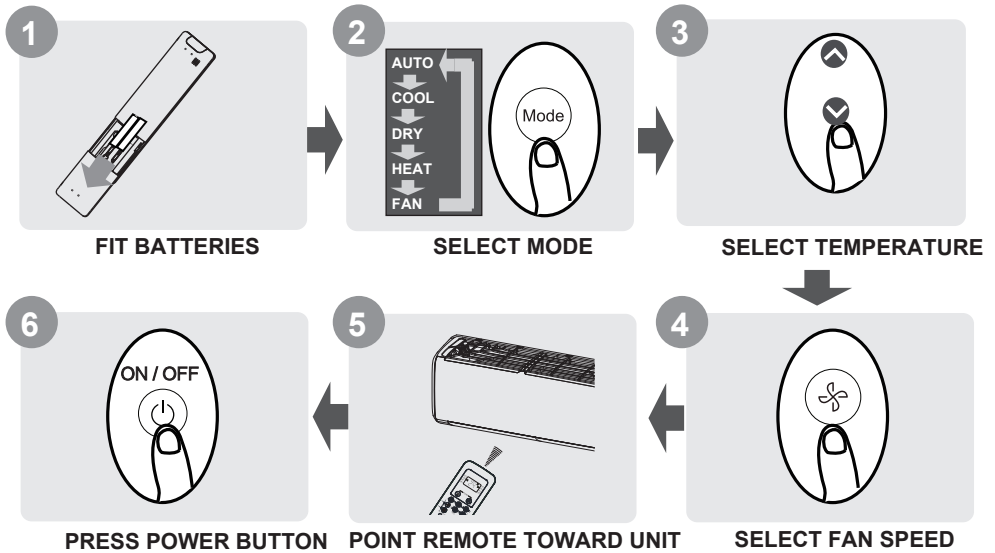
# Table of Contents

<b>Remote Controller Specifications .....</b>	<b>02</b>
<b>Handling the Remote Controller .....</b>	<b>03</b>
<b>Buttons and Functions .....</b>	<b>04</b>
<b>Remote Screen Indicators .....</b>	<b>08</b>
<b>How to Use Basic Functions .....</b>	<b>09</b>
<b>How to Use Advanced Functions .....</b>	<b>11</b>

# Remote Controller Specifications

<b>Model</b>	RRG10A(E2S)/BGEF, RG10A(E2S)/BGEFU1, RG10A1(E2S)/BGEF, RG10A2(E2S)/BGEFU1, RG10A2(E2S)/BGCEFU1, RG10A2(E2S)/BGCEF, RG10A10(E2S)/BGEF, RG10B(E2)/BGEF, RG10B1(E2)/BGEF, RG10B2(E2)/BGCEF, RG10B10(E2)/BGEF
<b>Rated Voltage</b>	3.0V( Dry batteries R03/LR03×2)
<b>Signal Receiving Range</b>	8m
<b>Environment</b>	-5°C~60°C(23°F~140°F)

## Quick Start Guide



### NOT SURE WHAT A FUNCTION DOES?

Refer to the **How to Use Basic Functions** and **How to Use Advanced Functions** sections of this manual for a detailed description of how to use your air conditioner.

### SPECIAL NOTE

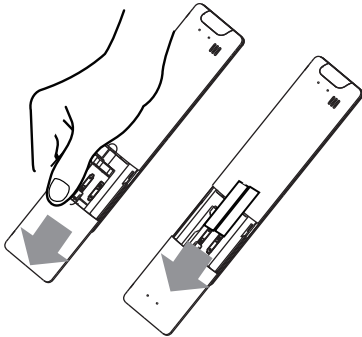
- Button designs on your unit may differ slightly from the example shown.
- If the indoor unit does not have a particular function, pressing that function's button on the remote control will have no effect.
- When there are wide differences between "Remote controller Manual" and "USER'S MANUAL" on function description, the description of "USER'S MANUAL" shall prevail.

# Handling the Remote Controller

## Inserting and Replacing Batteries

Your air conditioning unit may come with two batteries(some units). Put the batteries in the remote control before use.

1. Slide the back cover from the remote control downward, exposing the battery compartment.
2. Insert the batteries, paying attention to match up the (+) and (-) ends of the batteries with the symbols inside the battery compartment.
3. Slide the battery cover back into place.



## ! BATTERY NOTES

For optimum product performance:

- Do not mix old and new batteries, or batteries of different types.
- Do not leave batteries in the remote control if you don't plan on using the device for more than 2 months.



## BATTERY DISPOSAL

Do not dispose of batteries as unsorted municipal waste. Refer to local laws for proper disposal of batteries.

## TIPS FOR USING REMOTE CONTROL

- The remote control must be used within 8 meters of the unit.
- The unit will beep when remote signal is received.
- Curtains, other materials and direct sunlight can interfere with the infrared signal receiver.
- Remove batteries if the remote will not be used more than 2 months.

## NOTES FOR USING REMOTE CONTROL

The device could comply with the local national regulations.

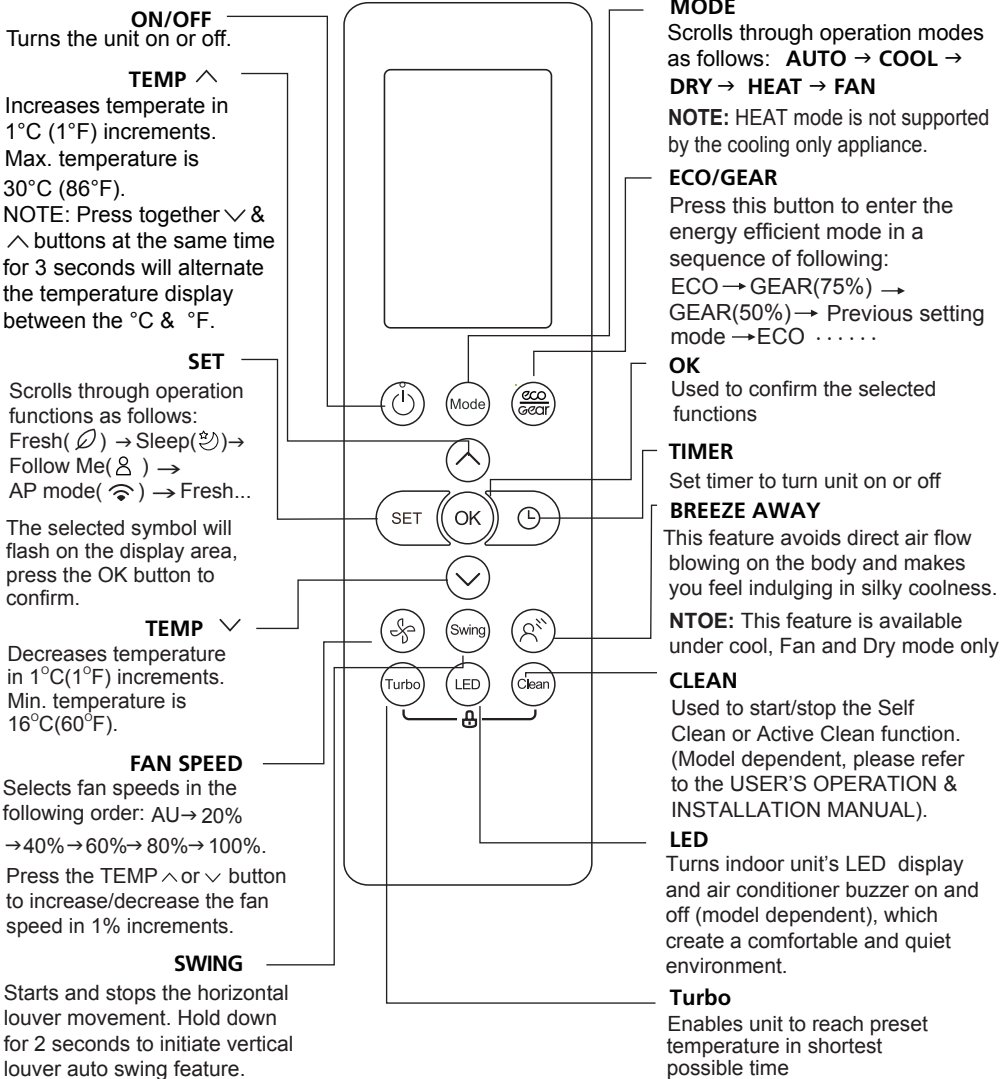
- In Canada, it should comply with CAN ICES-3(B)/NMB-3(B).
- In USA, this device complies with part 15 of the FCC Rules. Operation is subject to the following two conditions:
  - (1) This device may not cause harmful interference, and
  - (2) this device must accept any interference received, including interference that may cause undesired operation.

This equipment has been tested and found to comply with the limits for a Class B digital device, pursuant to part 15 of the FCC Rules. These limits are designed to provide reasonable protection against harmful interference in a residential installation. This equipment generates, uses and can radiate radio frequency energy and, if not installed and used in accordance with the instructions, may cause harmful interference to radio communications. However, there is no guarantee that interference will not occur in a particular installation. If this equipment does cause harmful interference to radio or television reception, which can be determined by turning the equipment off and on, the user is encouraged to try to correct the interference by one or more of the following measures:

- Reorient or relocate the receiving antenna.
- Increase the separation between the equipment and receiver.
- Connect the equipment into an outlet on a circuit different from that to which the receiver is connected.
- Consult the dealer or an experienced radio/TV technician for help.
- Changes or modifications not approved by the party responsible for compliance could void user's authority to operate the equipment.

# Buttons and Functions

Before you begin using your new air conditioner, make sure to familiarize yourself with its remote control. The following is a brief introduction to the remote control itself. For instructions on how to operate your air conditioner, refer to the **How to Use Basic Functions** section of this manual.



**Model:** RG10A2(E2S)/BGEFU1  
 RG10A10(E2S)/BGEF(20-28 °C/68-82 °F)  
 RG10A(E2S)/BGEF & RG10A(E2S)/BGEFU1(Fresh feature is not available)  
 RG10A2(E2S)/BGCEFU1 & RG10A2(E2S)/BGCEF  
 (Cooling only models, AUTO mode and HEAT mode are not available)



**ON/OFF**  
Turns the unit on or off.

**TEMP ^**  
Increases temperature in 1°C (1°F) increments. Max. temperature is 30°C (86°F).  
**NOTE:** Press together ∨ & ^ buttons at the same time for 3 seconds will alternate the temperature display between the °C & °F.

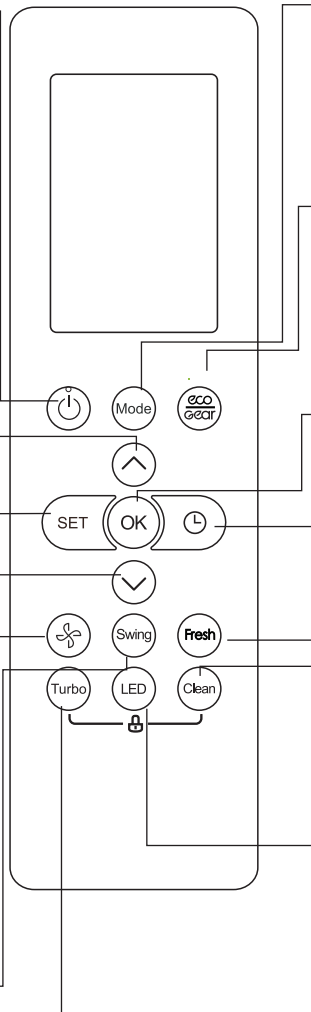
**SET**  
Scrolls through operation functions as follows:  
Breeze Away (🌀) → Sleep (🌙) → Follow Me (👤) → AP mode (📶) → Breeze Away ...

The selected symbol will flash on the display area, press OK button to confirm.

**TEMP ∨**  
Decreases temperature in 1°C (1°F) increments. Min. temperature is 16°C (60°F).

**FAN SPEED**  
Selects fan speeds in the following order: AU → 20% → 40% → 60% → 80% → 100%.  
Press the TEMP ^ or ∨ button to increase/decrease the fan speed in 1% increments.

**SWING**  
Starts and stops the horizontal louver movement. Hold down for 2 seconds to initiate vertical louver auto swing feature.



**MODE**  
Scrolls through operation modes as follows: **AUTO** → **COOL** → **DRY** → **HEAT** → **FAN**  
**NOTE:** HEAT mode is not supported by the cooling only appliance.

**ECO/GEAR**  
Press this button to enter the energy efficient mode in a sequence of following:  
ECO → GEAR(75%) → GEAR(50%) → Previous setting mode → ECO . . . . .

**OK**  
Used to confirm the selected functions

**TIMER**  
Set timer to turn unit on or off

**FRESH**  
Used to starts and stops the Fresh feature.

**CLEAN**  
Used to start/stop the Self Clean or Active Clean function. (Model dependent, please refer to the USER'S OPERATION & INSTALLATION MANUAL).

**LED**  
Turns indoor unit's LED display and air conditioner buzzer on and off (model dependent), which create a comfortable and quiet environment.

**Turbo**  
Enables unit to reach pr temperature in shortest possible time

Model: RG10A1(E2S)/BGEF

**ON/OFF**  
Turns the unit on or off.

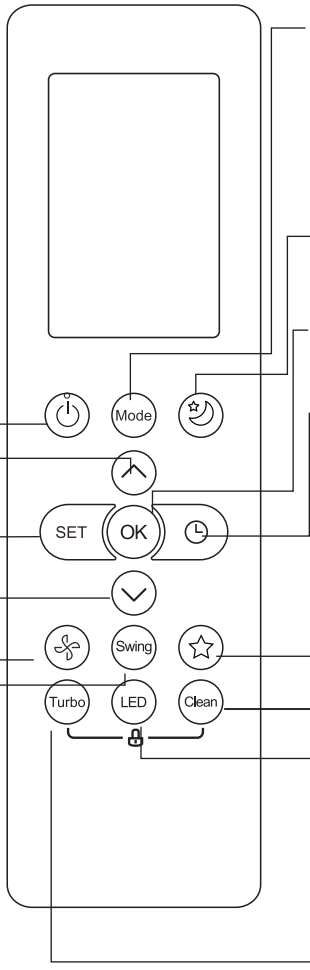
**TEMP** ^  
Increases temperature in 1°C (1°F) increments.  
Max. temperature is 30°C (86°F).  
NOTE: Press together v & ^ buttons at the same time for 3 seconds will alternate the temperature display between the °C & °F.

**SET**  
Scrolls through operation functions as follows:  
Fresh (🍃) → Follow Me (⊗)  
AP mode (📶) → Fresh ....  
The selected symbol will flash on the display area, press the OK button to confirm.

**TEMP** v  
Decreases temperature in 1°C(1°F) increments.  
Min. temperature is 16°C(60°F).

**FAN SPEED**  
Selects fan speeds in the following order:  
AUTO → LOW→MED→ HIGH  
NOTE: Holding this button down for 2 seconds will activate Silence feature.

**SWING**  
Starts and stops the horizontal louver movement. Hold down for 2 seconds to initiate vertical louver auto swing feature(some units).



**MODE**  
Scrolls through operation modes as follows: **AUTO** → **COOL** → **DRY** → **HEAT** → **FAN**  
**NOTE:** HEAT mode is not supported by the cooling only appliance.

**SLEEP**  
Saves energy during sleeping hours.

**OK**  
Used to confirm the selected functions

**TIMER**  
Set timer to turn unit on or off.

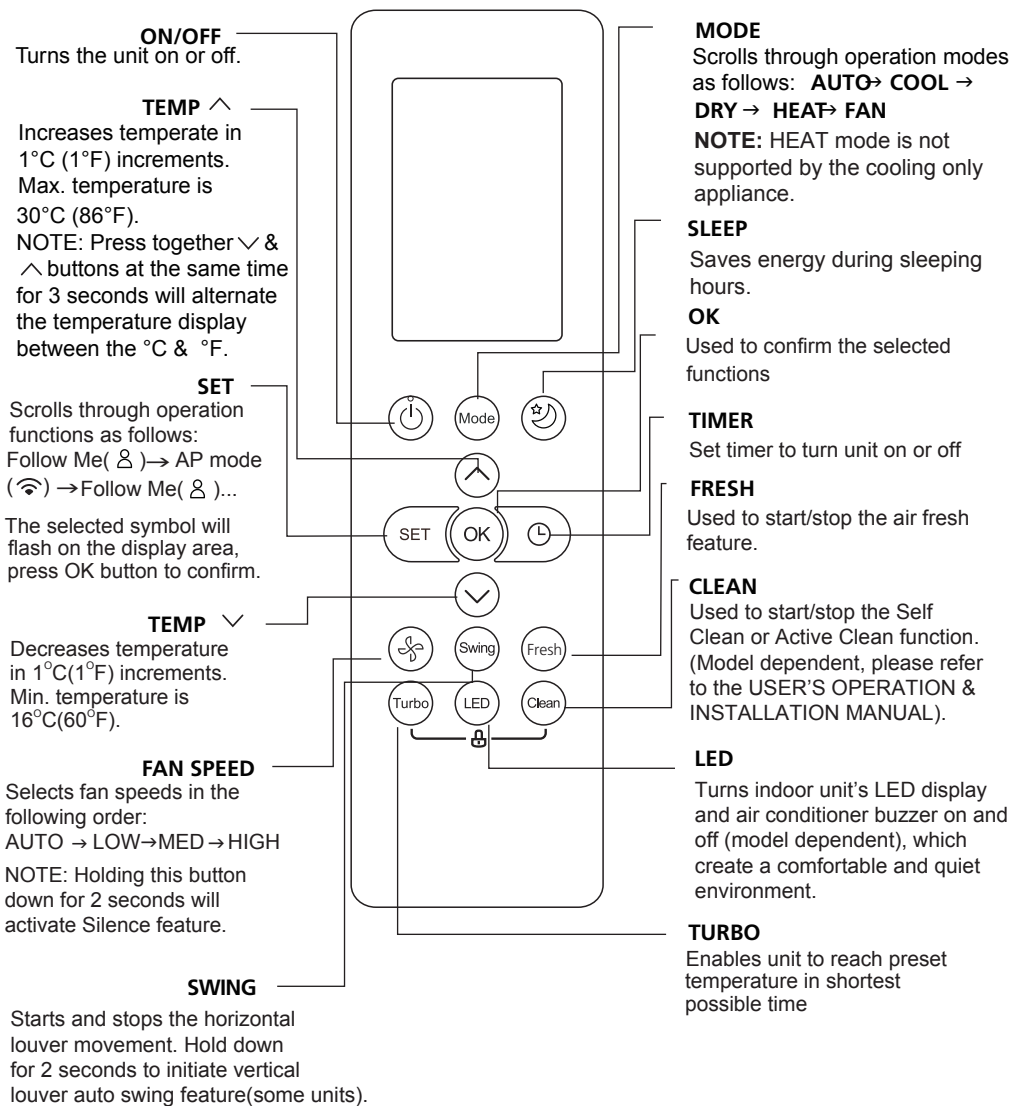
**SHORTCUT**  
Used to restore the current settings or resume previous settings.

**CLEAN**  
Used to start/stop the Self Clean or Active Clean function. (Model dependent, please refer to the USER'S OPERATION & INSTALLATION MANUAL).

**LED**  
Turns indoor unit's LED display and air conditioner buzzer on and off (model dependent), which create a comfortable and quiet environment.

**Turbo**  
Enables unit to reach preset temperature in shortest possible time

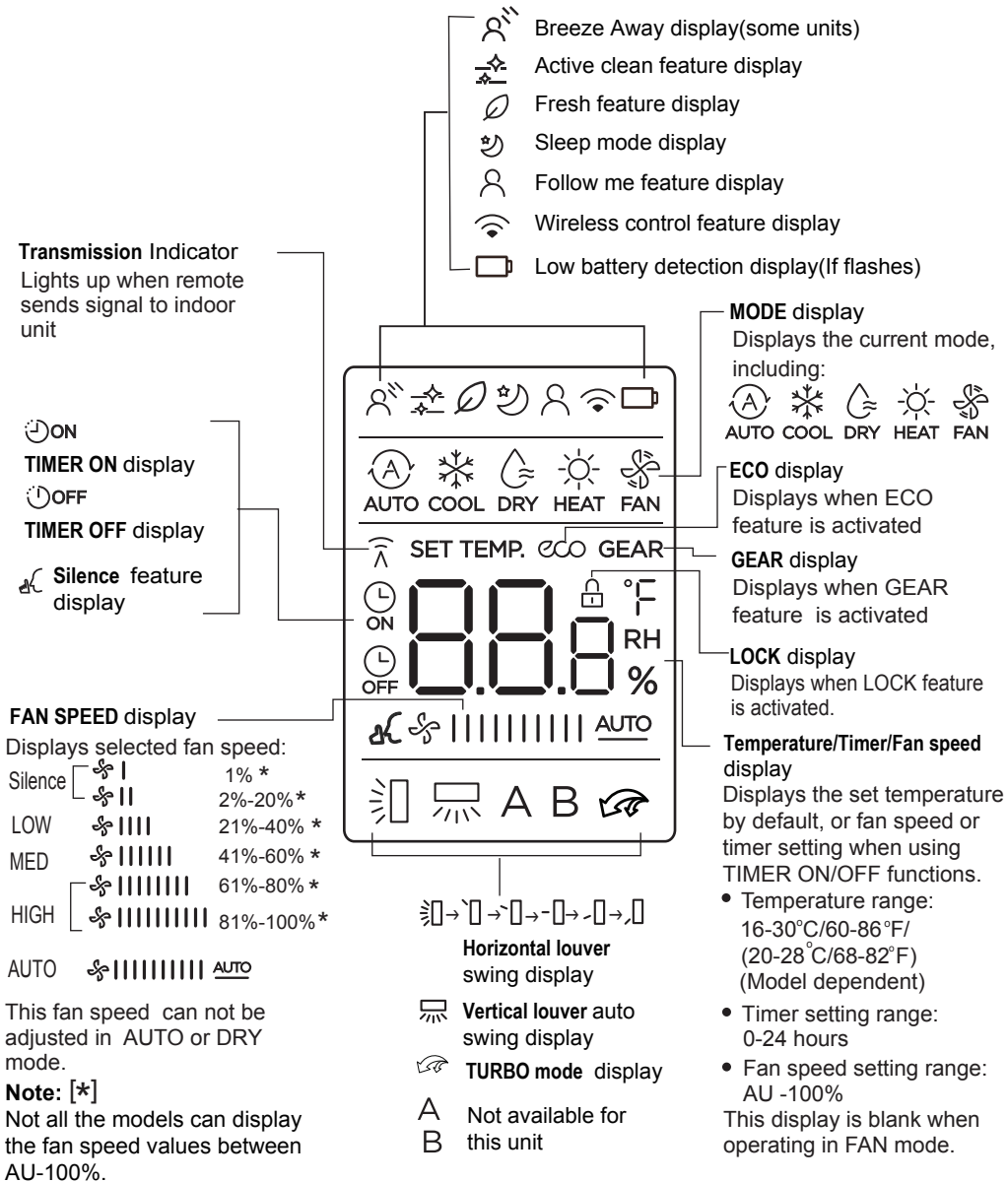
**Model: RG10B(E2)/BGEF(Fresh feature is not available)**  
**RG10B10(E2)/BGEF(20-28°C/68-82°F)**  
**RG10B2(E2)/BGCEF (Cooling only model, AUTO mode and HEAT mode are not available )**



Model: RG10B1(E2)/BGEF

# Remote Screen Indicators

Information are displayed when the remote controller is power up.



# How to Use Basic Functions

**! ATTENTION** Before operation, please ensure the unit is plugged in and power is available.

## AUTO Mode

Select AUTO mode



Set your desired temperature



Turn on the air conditioner



### NOTE:

1. In AUTO mode, the unit will automatically select the COOL, FAN, or HEAT function based on the set temperature.
2. In AUTO mode, fan speed can not be set.

## COOL or HEAT Mode

Select COOL/HEAT mode



Set the temperature



Set the fan speed



Turn on the air conditioner



## DRY Mode

Select DRY mode



Set your desired temperature



Turn on the air conditioner



**NOTE:** In DRY mode, fan speed can not be set since it has already been automatically controlled.

## FAN Mode

Select FAN mode



Set the fan speed



Turn on the air conditioner



**NOTE:** In FAN mode, you can't set the temperature. As a result, no temperature displays in remote screen.

## Setting the TIMER

**TIMER ON/OFF** - Set the amount of time after which the unit will automatically turn on/off.

### TIMER ON setting

Press **TIMER** button to initiate the ON time sequence.



Press **Temp. up** or **down** button for for multiple times to set the desired time to turn on the unit.

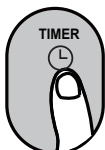


Point remote to unit and wait 1sec, the **TIMER ON** will be activated.

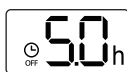


### TIMER OFF setting

Press **TIMER** button to initiate the OFF time sequence.



Press **Temp. up** or **down** button for for multiple times to set the desired time to turn off the unit.



Point remote to unit and wait 1sec, the **TIMER OFF** will be activated.

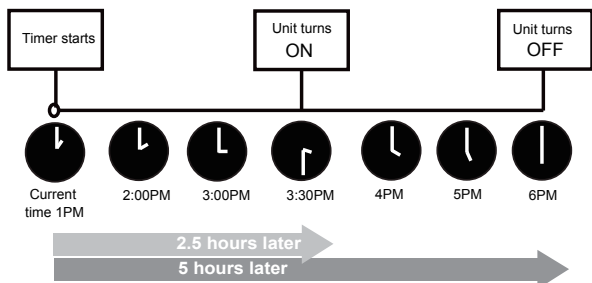
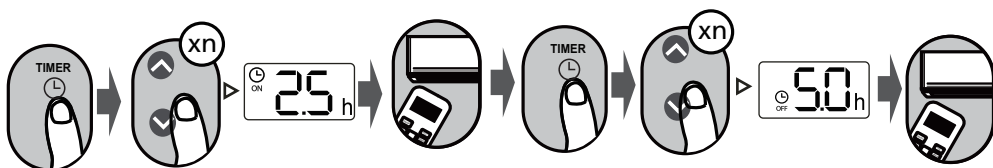


#### NOTE:

1. When setting the **TIMER ON** or **TIMER OFF**, the time will increase by 30 minutes increments with each press, up to 10 hours. After 10 hours and up to 24, it will increase in 1 hour increments. (For example, press 5 times to get 2.5h, and press 10 times to get 5h.) The timer will revert to 0.0 after 24.
2. Cancel either function by setting its timer to 0.0h.

### TIMER ON & OFF setting(example)

Keep in mind that the time periods you set for both functions refer to hours after the current time.

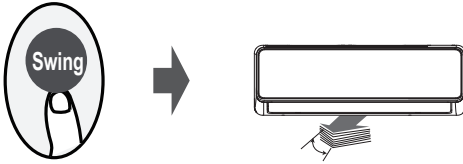


Example: If current timer is 1:00PM, to set the timer as above steps, the unit will turn on 2.5h later (3:30PM) and turn off at 6:00PM.

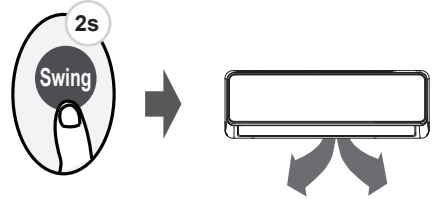
# How to Use Advanced Functions

## Swing function

Press Swing button

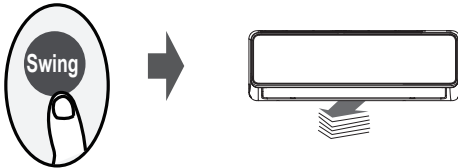


The horizontal louver will swing up and down automatically when pressing Swing button. Press again to make it stop.



Keep pressing this button more than 2 seconds, the vertical louver swing function is activated. (Model dependent)

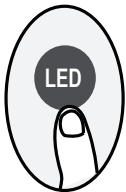
## Airflow direction



If continue to press the SWING button, five different airflow directions can be set. The louver can be move at a certain range each time you press the button. Press the button until the direction you prefer is reached.

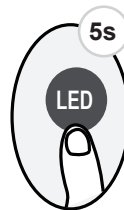
**NOTE:** When the unit is off, press and hold **MODE** and **SWING** buttons together for one second, the louver will open for a certain angle, which makes it very convenient for cleaning. Press and hold **MODE** and **SWING** buttons together for one second to reset the louver(Model dependent).

## LED DISPLAY



Press LED button

Press this button to turn on and turn off the display on the indoor unit.



Press this button more than 5 seconds(some units)

Keep pressing this button more than 5 seconds, the indoor unit will display the actual room temperature. Press more than 5 seconds again will revert back to display the setting temperature.

## ECO/GEAR function(some units)



Press X-ECO button to enter the energy efficient mode in a sequence of following:  
ECO → GEAR(75%) → GEAR(50%) → Previous setting mode → ECO.....

Note: This function is only available under COOL mode.

### ECO operation:

Under cooling mode, press this button, the remote controller will adjust the temperature automatically to 24°C/75°F, fan speed of Auto to save energy (only when the set temperature is less than 24°C/75°F). If the set temperature is above 24°C/75°F, press the ECO button, the fan speed will change to Auto, the set temperature will remain unchanged.

### NOTE:

Pressing the ECO button, or modifying the mode or adjusting the set temperature to less than 24°C/75°F will stop ECO operation.

Under ECO operation, the set temperature should be 24°C/75°F or above, it may result in insufficient cooling. If you feel uncomfortable, just press the ECO button again to stop it.

### GEAR operation:

Press the ECO/GEAR button to enter the GEAR operation as following:  
75%(up to 75% electrical energy consumption)



50%(up to 50% electrical energy consumption)



Previous setting mode.

Under GEAR operation, the display on the remote controller will alternate between electrical energy consumption and set temperature.

## SHORTCUT function(some units)



Push this button when remote controller is on, the system will automatically revert back to the previous settings including operating mode, setting temperature, fan speed level and sleep feature (if activated).

If pushing more than 2 seconds, the system will automatically restore the current operation settings including operating mode, setting temperature, fan speed level and sleep feature (if activated).



## Silence function



Keep pressing Fan button for more than 2 seconds to activate/disable Silence function(some units).

Due to low frequency operation of compressor, it may result in insufficient cooling and heating capacity. Press ON/OFF, Mode, Sleep, Turbo or Clean button while operating will cancel silence function.

## FP function

Press this button 2 times during one second under HEAT Mode and setting temperature of 16°C/60°F or 20°C/68°F(for models of RG10A10(E2S)/BGEF, RG10B10(E2)/BGEF ).



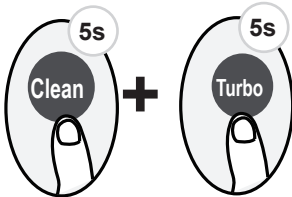
The unit will operate at high fan speed (while compressor on) with temperature automatically set to 8°C/46°F.

**Note:** This function is for heat pump air conditioner only.

Press this button 2 times during one second under HEAT Mode and setting temperature of 16°C/60°F or 20°C/68°F(for models of RG10A10(E2S)/BGEF, RG10B10(E2)/BGEF) to activate FP function.

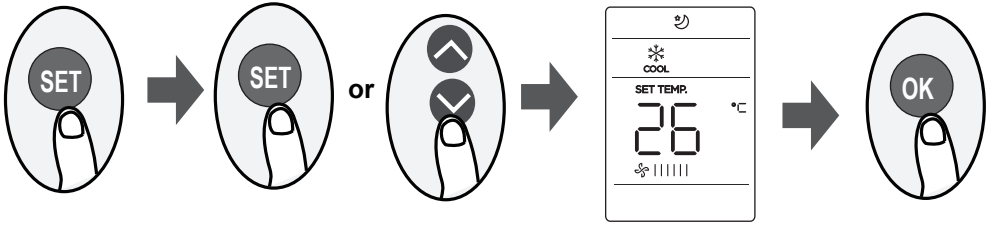
Press On/Off, Sleep, Mode, Fan and Temp. button while operating will cancel this function.

## LOCK function



Press together **Clean** button and **Turbo** button at the same time more than 5 seconds to activate Lock function. All buttons will not response except pressing these two buttons for two seconds again to disable locking.

## SET function



- Press the SET button to enter the function setting, then press SET button or TEMP▼ or TEMP▲ button to select the desired function. The selected symbol will flash on the display area, press the OK button to confirm.
- To cancel the selected function, just perform the same procedures as above.
- Press the SET button to scroll through operation functions as follows:  
Breeze Away\* (☼) → Fresh\* (🍃) → Sleep (🌙) → Follow Me (👤) → AP mode (📶)  
[\*]: If your remote controller has Breeze Away button, Fresh button or Sleep button, you can not use the SET button to select the Breeze Away, Fresh or Sleep feature.

### Breeze Away function (☼) (some units) :

This feature avoids direct air flow blowing on the body and makes you feel indulging in silky coolness.

**NOTE:** This feature is available under cool, Fan and Dry mode only.

### FRESH function (🍃) (some units) :

When the FRESH function is initiated, the ion generator is energized and will help to purify the air in the room.

### Sleep function (🌙) :

The SLEEP function is used to decrease energy use while you sleep (and don't need the same temperature settings to stay comfortable). This function can only be activated via remote control.

For the detail, see "sleep operation" in "USER'S MANUAL"

**Note:** The SLEEP function is not available in FAN or DRY mode.

### Follow me function (👤) :

The FOLLOW ME function enables the remote control to measure the temperature at its current location and send this signal to the air conditioner every 3 minutes interval. When using AUTO, COOL or HEAT modes, measuring ambient temperature from the remote control (instead of from the indoor unit itself) will enable the air conditioner to optimize the temperature around you and ensure maximum comfort.

**NOTE:** Press and hold Turbo button for seven seconds to start/stop memory feature of Follow Me function.

- If the memory feature is activated, "On" displays for 3 seconds on the screen.
- If the memory feature is stopped, "OF" displays for 3 seconds on the screen.
- While the memory feature is activated, press the ON/OFF button, shift the mode or power failure will not cancel the Follow me function.

### AP function (📶) (some units) :

Choose AP mode to do wireless network configuration. For some units, it doesn't work by pressing the SET button. To enter the AP mode, continuously press the LED button seven times in 10 seconds.



The design and specifications are subject to change without prior notice for product improvement. Consult with the sales agency or manufacturer for details.

**CR277-RG10(E2S)**