



冷氣機

遙控器使用說明書

使用前請仔細閱讀本說明書
將本說明書保存起來以備日後使用

目 錄

遙控器型號及主要參數.....	1
遙控器的處理.....	2
遙控器各按鈕功能.....	3
遙控器顯示屏介紹.....	5
如何使用基本功能.....	6
如何使用高級功能.....	10

特別注意

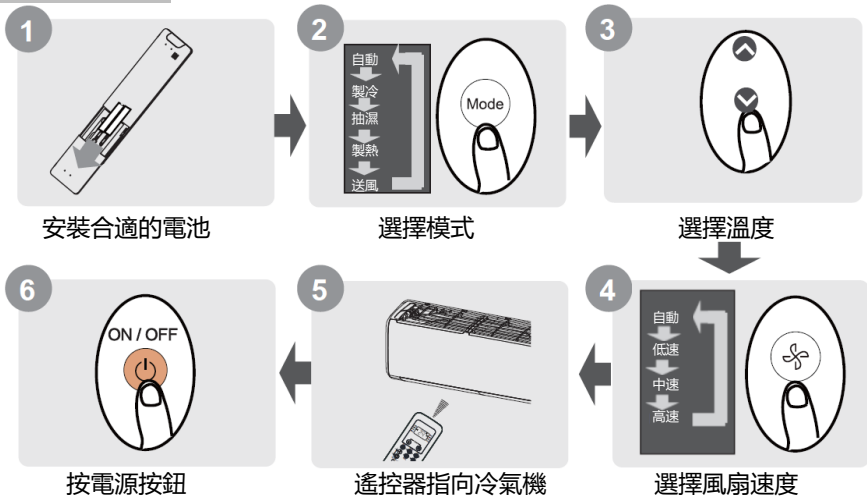
- 設備上的按鈕設計可能與顯示例略有不同。
- 如果室內機沒有相關功能，按遙控器上該功能的按鈕將不起作用。
- 當《遙控器手冊》與《用戶手冊》在功能描述上有較大差異時，以《用戶手冊》的描述為準。

遙控器型號及主要參數

型號	RG10B(F)/BGEF, RG10B(F1)/BGEFU1, RG10B1(F)/BGEF, RG10B2(F)/BGCEF, RG10B10(F)/BGEF, RG10B(H)/BGEF, RG10B(H1)/BGEFU1, RG10B1(H)/BGEF, RG10B2(H)/BGCEF, RG10B10(H)/BGEF, RG10B(G)/BGEF, RG10B(G1)/BGEFU1, RG10B1(G)/BGEF, RG10B2(G)/BGCEF, RG10B10(G)/BGEF, RG10Y1(F)/BGEF, RG10Y1(H)/BGEF, RG10Y1(G)/BGEF
額定電壓	3.0V (兩節 R03/LR03 乾電池)
信號到達距離	8m
使用條件	-5°C ~ 60°C (23°F ~ 140°F)

注意：對於 RG10Y1(G)/BGEF 型號，如果在設定溫度低於 24 °C 的 COOL, AUTO 或 DRY 模式下關閉設備，則當您再次打開本機將自動設為 24 °C。如果在 HEAT 模式下關閉設備並且設定溫度超過 24 °C，則再次打開設備時，設定溫度將自動設置為 24°C。

快速入門指南



不確定功能是什麼？

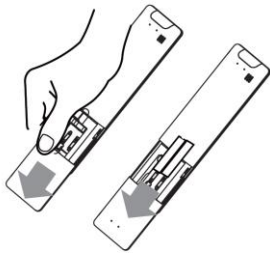
有關如何使用冷氣機的詳細說明，請參閱本手冊的“如何使用基本功能”和“如何使用高級功能”部分。

遙控器的處理

安裝和更換電池

您的冷氣機裝置可能隨附兩節電池（部分機型）。使用之前，請將電池放入遙控器中。

1. 從遙控器向下滑動後蓋，露出電池盒。
2. 插入電池，注意將電池的 (+) 和 (-) 末端與電池盒內的符號對齊。
3. 將電池蓋滑回原位。



注意事項

- 不要混合不同類型的新舊電池使用。
- 如果兩個月或以上的時間都不再使用遙控器，請取出電池。



電池處理

不要將電池作為未分類的垃圾處理。有關正確處理電池，請參閱當地法律。

使用遙控器的提示

- 必須在距離冷氣機 8 米以內使用遙控器。
- 收到遙控信號時，冷氣機會發出蜂鳴聲。
- 窗簾，其他材料和直射的陽光會干擾紅外線信號接收器。

使用遙控器的注意事項

該設備可能符合當地國家法規。

- 在加拿大，它應符合 CAN ICES-3 (B) / NMB-3 (B) 的要求。

- 在美國，此設備符合 FCC 規則的第 15 部分。操作必須符合以下兩個條件：

(1) 本遙控器不會造成有害干擾，並且

(2) 本設備必須接受收到的任何干擾，包括可能導致意外操作的干擾。

本設備經測試證明符合 FCC 規則第 15 部分中關於 B 類數字設備的限制。這些限制設計用於在住宅安裝中提供合理的保護，以防止有害干擾。本設備會產生，使用並輻射射頻能量，如果未按照說明進行安裝和使用，可能會對無線電通信造成有害干擾。但是，不能保證在特定安裝中不會發生干擾。如果此設備確實對無線電或電視接收造成有害干擾（可以通過打開和關閉設備來確定），則鼓勵用戶嘗試通過以下一種或多種措施來消除干擾：

- 重新調整或擺放接收天線。
- 增加設備和接收器之間的距離。
- 將設備連接到與接收器不同電路的插座上。
- 請諮詢經銷商或有經驗的廣播/電視技術人員以尋求幫助。
- 未經負責合規方批准的更改或修改可能會使用戶喪失操作設備的權限。

遙控器各按鈕功能

在開始使用新的冷氣機之前，請確保熟悉其遙控器。以下是遙控器本身的簡要介紹。有關如何操作冷氣機的說明，請參閱本手冊的“如何使用基本功能”部分。

開/關按鍵

啟動或關閉冷氣機。

溫度升 ^ 按鍵

以 1°C (1°F) 的增量增加溫度。
最高溫度為 30°C (86°F)。

設置按鍵

按 SET 按鈕可滾動瀏覽以下功能：
新鮮風 (∅)-隨身感 (8)-AP 模式 (☁)-新鮮風 (∅)...
所選符號將在顯示區域上閃爍，然後按 OK 按鈕進行確認。

溫度降 v 按鍵

以 1°C (1°F) 的增量降低溫度。最低溫度為 17°C (62°F)。

風速按鍵

在以下順序選擇風扇速度
自動-低速-中速-高速。
按住此按鈕 2 秒鐘將啟動靜音功能

擺風按鍵

開始和停止水平百葉窗運作。
按住 2 秒鐘以啟動垂直百葉窗自動擺動功能(適用部分機型)。

增強按鍵

使設備在最短的時間內達到預設溫度(適用部分機型)

模式按鍵

按以下順序選取運轉模式：
自動-製冷-抽濕-製熱-送風
注意：淨冷機無制熱功能

睡眠

在睡眠時間節省能源。

OK 確認鍵

用於確認所選取的功能。

定時按鍵

設定定時開機或關機。

記憶按鍵

用於恢復當前設置或恢復以前的設置。

自動清洗按鍵

用於啟動/停止自動清潔或主動清潔功能。
(適用部分機型)

LED 按鍵

打開和關閉室內機的 LED 顯示屏和冷氣機蜂鳴器(適用部分機型)，從而營造舒適，安靜的環境。

型號：RG10B(F/H/G)/BGEF & RG10B(F1/H1/G1)/BGEFU1, RG10Y1(F/H/G)/BGEF(清新功能不可用)

RG10B10(F/H/G)/BGEF(20-28°C) RG10B2(F/H/G)/BGCEF(淨冷遙控，自動模式和製熱模式不可用)

注意：對於 RG10B(F1/H1/G1)/BGEFU1 型號，同時按下 ^ & v 按鈕 3 秒鐘將在 °C 和 °F 刻度之間交替顯示溫度。

開/關按鍵

啟動或關閉冷氣機。

溫度升 ^ 按鍵

以 1°C (1°F) 的增量增加溫度。
最高溫度為 30°C (86°F)。

設置按鍵

按 SET 按鈕可滾動瀏覽以下功能：
隨身感 (R)-AP 模式 (Wi-Fi)
-隨身感 (R)...
所選符號將在顯示區域上閃爍，然後按 OK 按鈕進行確認。

溫度降 v 按鍵

以 1°C (1°F) 的增量降低溫度。最低溫度為 17°C (62°F)。

風速按鍵

在以下順序選擇風扇速度
自動-低速-中速-高速。
按住此按鈕 2 秒鐘將啟動靜音功能

擺風按鍵

開始和停止水平百葉窗運作。
按住 2 秒鐘以啟動垂直百葉窗自動擺動功能(適用部分機型)。

增強按鍵

使設備在最短的時間內達到預設溫度(適用部分機型)。

模式按鍵

按以下順序選擇運轉模式：
自動-製冷-抽濕-製熱-送風
注意：淨冷機無制熱功能

睡眠

在睡眠時間節省能源

OK 確認鍵

用於確認所選取的功能。

定時按鍵

設定定時開機或關機。

鮮風

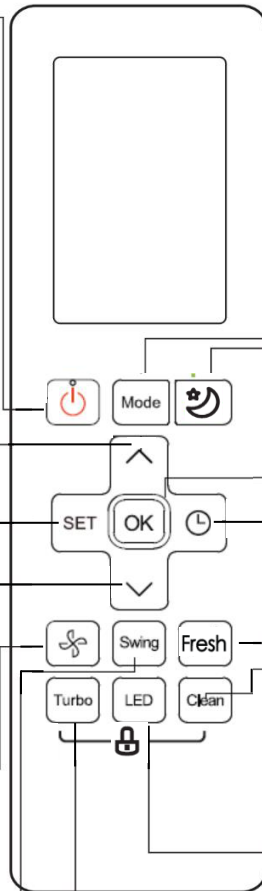
用於啟動/停止鮮風功能

自動清洗按鍵

用於啟動/停止自動清潔或主動清潔功能。
(適用部分機型)

LED 按鍵

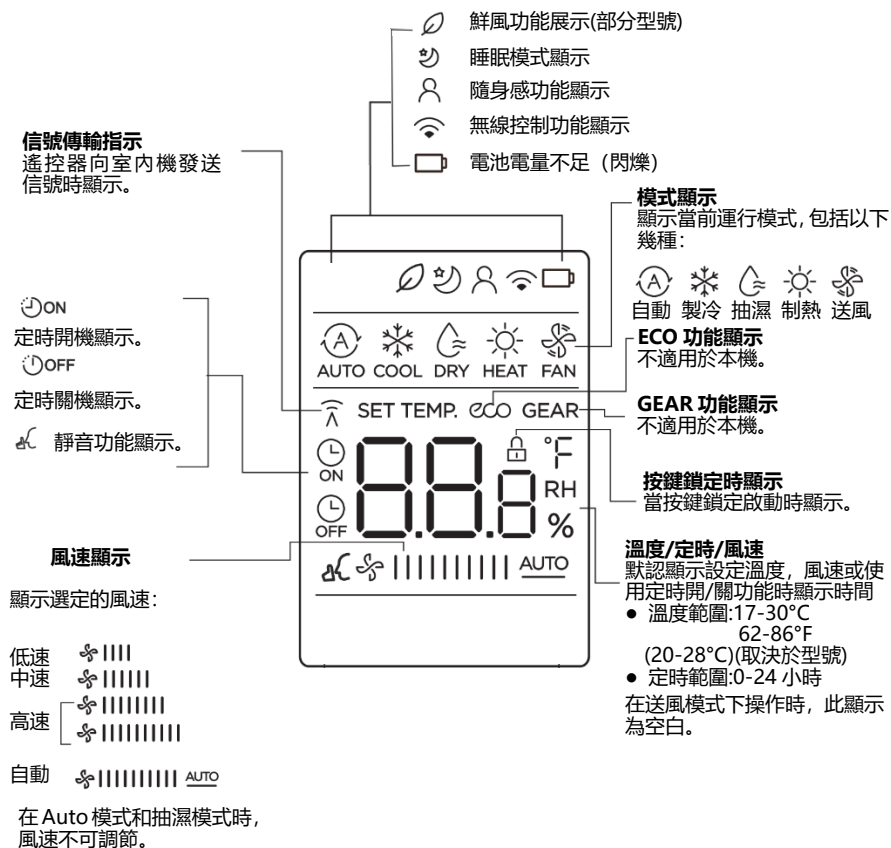
打開和關閉室內機的 LED 顯示屏和冷氣機蜂鳴器
(適用部分機型)，從而營造舒適，安靜的環境。



型號：RG10B1(F/H/G)/BGEF

遙控器顯示屏介紹

當初次安裝電池時，顯示屏會亮著所有信息。

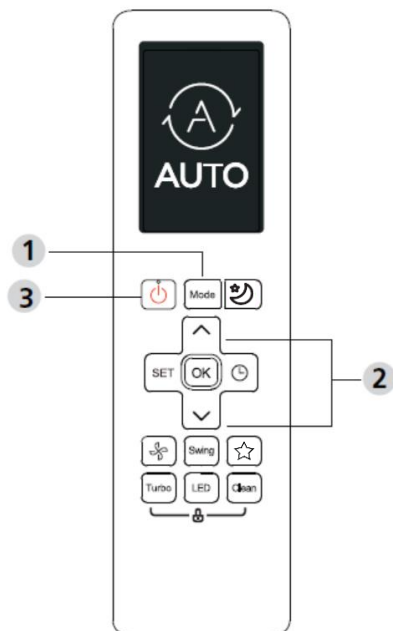


注意：圖中顯示的所有指標都是為了清楚表述。
但是在實際操作期間，在顯示窗口中僅顯示相對功能符號。

如何使用基本功能

基本操作

注意！在操作之前，請確保冷氣機已插入並接通電源。



製冷模式

1. 按 MODE 按鈕選擇 **COOL 製冷**
2. 按 ^/v 按鈕設置所需的溫度
3. 按 FAN 按鈕調節風速範圍：
自動—低速-中速或者高速
4. 按 ON / OFF 按鈕啟動冷氣機

設定溫度

冷氣機的工作溫度範圍是 17-30°C (62-86°F) / 20-28 °C。

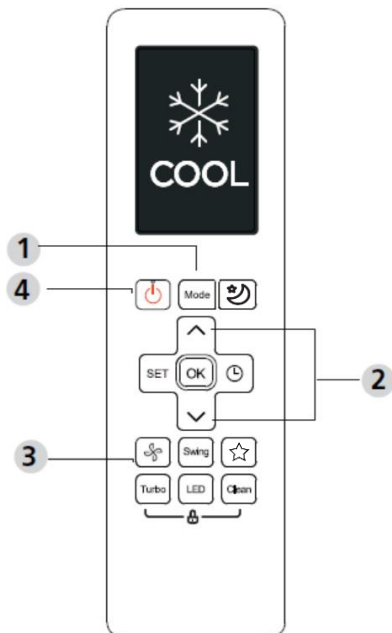
您可以以 1°C (1°F) 的增量增加或減少設定溫度。

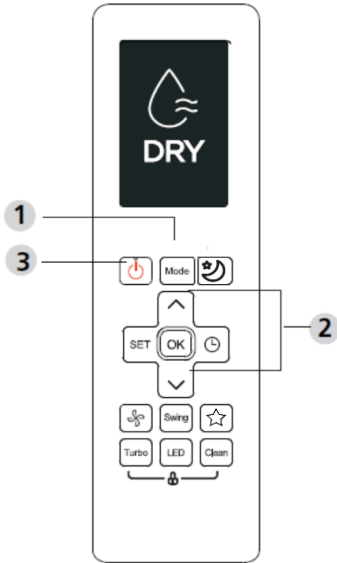
自動模式

在自動模式下，冷氣機將根據設定溫度自動選擇製冷，送風和製熱模式。

1. 按 MODE 按鈕選擇 **AUTO 自動**
2. 按 ^/v 按鈕設置所需的溫度
3. 按 ON / OFF 按鈕啟動冷氣機

注意：在自動模式下，無法調整風速





抽濕模式

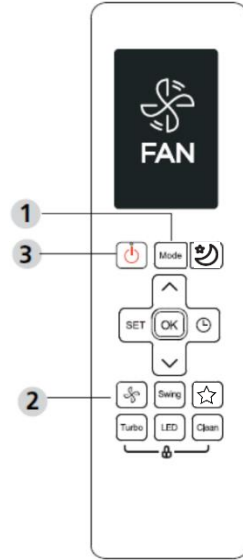
1. 按 MODE 按鈕選擇 **DRY 抽濕**
2. 按 ^/v 按鈕設置所需的溫度
3. 按 ON / OFF 按鈕啟動冷氣機

注意：在抽濕模式下，無法調整風速

送風模式

1. 按 MODE 按鈕選擇 **FAN 送風模式**
2. 按 FAN 按鈕調節風速範圍：
自動-低速-中速-高速
3. 按 ON / OFF 按鈕啟動冷氣機

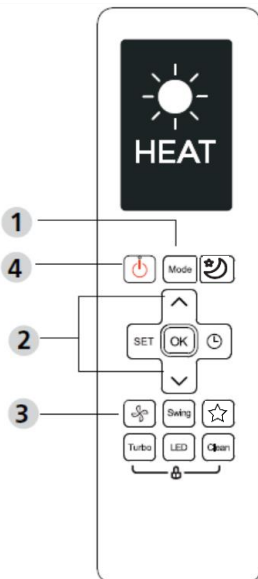
注意：您無法在 FAN 模式下設置溫度而遙控器的 LCD 屏幕將不會顯示溫度



製熱模式

1. 按 MODE 按鈕選擇 **HEAT 製熱**
2. 按 ^/v 按鈕設置所需的溫度
3. 按 FAN 按鈕調節風速範圍：
自動-低速-中速-高速
4. 按 ON / OFF 按鈕啟動冷氣機

注意：隨著室外溫度下降，其製熱功能的性能可能會受到影響。在這種情況下，我們建議將此冷氣機與其他加熱設備一起使用。

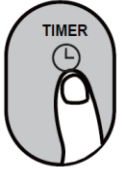


定時功能設置

設置冷氣機將自動打開/關閉的時間。

定時開機設置

按 **TIMER** 按鈕啟動開機時間序列。



按溫度調節上或下按鈕多次，以設置開啟冷氣機所需的時間。

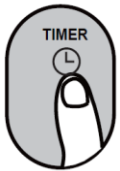


將遙控器指向冷氣機並等待 1 秒鐘，將啟動定時開機功能。



定時關機設置

按 **TIMER** 按鈕啟動關機時間序列。



按溫度調節上或下按鈕多次，以設置關閉冷氣機所需的時間。



將遙控器指向冷氣機並等待 1 秒鐘，將啟動定時關機功能。



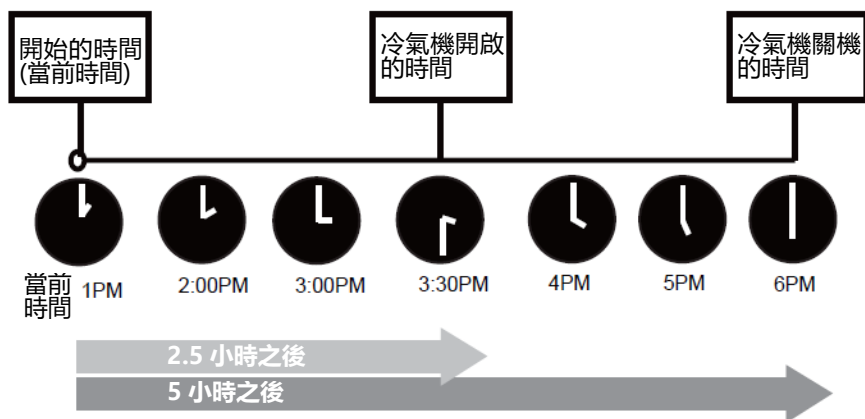
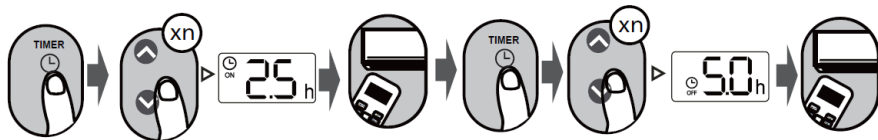
注意：

1. 設定 **TIMER ON** 定時開機或 **TIMER OFF** 定時關機時，每按一次，時間將增加 30 分鐘，最多增加 10 個小時。10-24 小時之間，它將以 1 小時為增量增加。(例如，按 5 次得 2.5h，然後按 10 次得 5h,) 計時器將在 24 點後恢復為 0.0h。
2. 通過將其計時器設置為 0.0h 來取消上述功能。

定時器開與關設置 (示例)

請記住，為這兩個功能設置的時間段是指當前時間之後的小時數。

示例: 如果當前計時器為 1:00 PM, 則要按上述步驟設置計時器, 本機將在 2.5h (3:30 PM) 之後打開, 並在 6:00 PM 關閉。

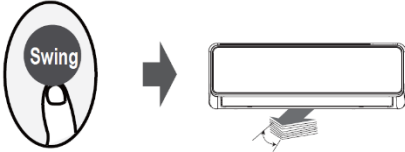


示例: 如果當前計時器為 1:00 PM, 則要按上述步驟設置計時器, 本機將在 2.5h (3:30 PM) 之後打開, 並在 6:00 PM 關閉。

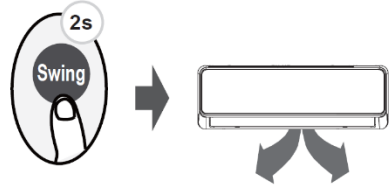
如何使用高級功能

擺風功能

按擺風 **Swing** 按鈕



按一下 **Swing 搖擺** 按鈕，水平百葉窗將自動上下搖擺。
再按一次使其停止。



按住此按鈕 2 秒鐘以上，將啟動垂直百葉窗擺動功能。(取決於型號)

記憶功能

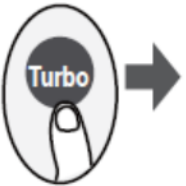
按記憶 **Shortcut** 按鈕



當遙控器打開時按下此按鈕，系統將自動恢復到先前的設置，包括操作模式、設置溫度、風速級別和睡眠功能（如果已啟動）。
如果按下超過 2 秒，系統將自動恢復當前運行設置，包括運行模式、設置溫度、風速級別和睡眠功能（如果已啟動）。

增強功能

按增強 **Turbo** 按鈕



當您在製冷模式下選擇 Turbo 功能時，設備將以最強風設置吹冷空氣以啟動冷卻過程。
當您在制熱模式下選擇 Turbo 功能時，對於帶有電加熱元件的裝置，電加熱將啟動加熱過程。

自動清洗功能

按自動清洗 **Clean** 按鈕

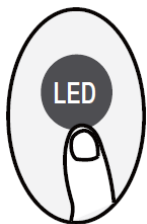


空氣中的細菌可以在設備換熱器周圍凝結的水分中生長。經常使用時，大部分水分會從設備中蒸發掉。

按下 Clean 按鈕，冷氣機將自動清潔。清潔後，本機將自動關閉。在循環中途按下 Clean 按鈕將取消操作並關閉設備。您可以隨時使用 Clean。

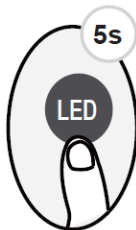
注意：您只能在 COOL 或 DRY 模式下啟動此功能。

LED 顯示屏



按一下 LED 按鍵

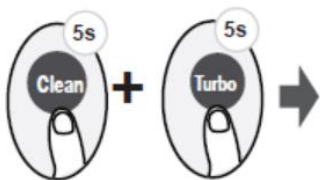
按下此按鈕可以打開和關閉
室內機上的顯示屏。



按住 LED 按鈕 5 秒鐘
以上 (部分機型)

按住此按鈕 5 秒鐘以上, 室內機
將顯示實際的室溫。再按 5 秒鐘
以上將恢復顯示設定溫度。

鎖定功能



同時按下 **Clean** 按鈕和 **Turbo** 按鈕 5 秒鐘以上以啟動
鎖定功能。

除了再次按下這兩個按鈕兩秒鐘以禁用鎖定以外, 所
有按鈕都不會設此功能。

靜音模式

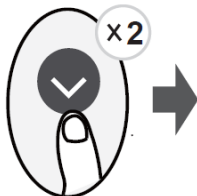


持續按住 **FAN 風扇** 按鈕 2 秒鐘以上以啟動/禁用靜音功能
(部分機型)。

由於壓縮機低頻運行, 可能會導致製冷和製熱能力不足。按
ON/OFF 開/關, MODE 模式, Sleep 睡眠, Turbo 增強或
Clean 清潔按鈕將取消靜音功能。

FP 模式

當冷氣機在加熱模式和設置溫度 17°C (62°F) 或 20°C 下, 在 1 秒內按此按鈕 2
次 (適用於 RG10B10(F/H/G)/BGEF 型號)。



該冷氣機將以高風速運行 (在壓縮機開啟時), 溫度自動設置
為 8°C / 46°F。注意: 此功能僅適用於熱泵空調。

在製熱模式下，將溫度設置為 16°C / 60°F 或 20°C / 68°F（對於 RG10A10 (B2) / BGEF 型號），按此按鈕 2 次以啟動 FP 功能。在操作過程中按開/關，睡眠，模式，風扇和溫度按鈕將取消此功能。

睡眠功能

按睡眠 SLEEP 按鈕

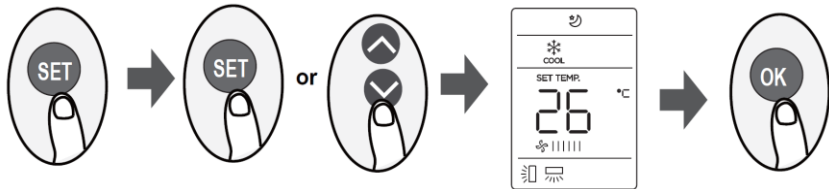


SLEEP 功能用於在您睡覺時減低風力（並且不需要相同的溫度設置來保持舒適）。此功能只能通過遙控器啟動。

詳情請參閱“用戶手冊”中的“休眠操作”。

注意：SLEEP 功能在 FAN 或 DRY 模式下不可使用。

SET 設置按鈕



- 按 **SET 按鈕** 進入功能設置，然後按 **SET 按鈕** 或 TEMP \checkmark 或 TEMP \wedge 按鈕選擇所需的**功能**。所選符號將在顯示區域上閃爍，然後按 **OK 按鈕** 進行確認。

- 要取消選擇的功能，只需執行與上述相同的步驟即可。

- 按 **SET 按鈕** 可滾動瀏覽以下功能：

新鮮風 (🌿) - 隨身感 (👤) - AP 模式 (📶)

[*]：如果您的遙控器具有 Fresh 按鈕，則無法使用 SET 按鈕選擇 Fresh 功能。

FRESH 鮮風功能 (🌿) (部分機型)：

當鮮風功能啟動時，離子發動器/等離子除塵器（取決於型號）通電，有助於去除空氣中的花粉和雜質。

Follow me 隨身感功能 (👤)：

隨身感功能使遙控器能夠測量當前遙控器位置的溫度，並每隔 3 分鐘將此信號發送到冷氣機。冷氣機在自動，製冷或製熱模式時，通過遙控器（而不是室內機本身）測量環境溫度，使冷氣機能夠優化您周圍的溫度並確保最大的舒適度。

注意：按住 Turbo 增強按鈕七秒鐘以啟動/停止“隨身感”功能的記憶功能。

- 如果啟動了記憶功能，則“ON”將在屏幕上顯示 3 秒鐘。

- 如果記憶功能停止，“OFF”將在屏幕上顯示 3 秒鐘。
- 啟動記憶功能後，按開/關按鈕，切換模式或斷電不會取消“隨身感”功能。

AP 無線功能 () (部分機型)

選擇 AP 模式進行無線網絡配置。對於某些設備，按 SET 按鈕起不了作用。要進入 AP 模式，請在 10 秒內連續按七次 LED 按鈕。

設計和規格如有更改，恕不另行通知。

有關信息詳情，請諮詢銷售代理商或製造商。

Air Conditioner Remote Controller

USER MANUAL

IMPORTANT NOTE:

Thank you for purchasing our air conditioner. Please read this manual carefully before using your new air conditioning unit. Please keep this manual properly for future reference.

Table of Contents

Remote Controller Specifications	02
Handling the Remote Controller	03
Buttons and Functions	04
Remote Controller Screen Indicators	06
How to Use Basic Functions	07
How to Use Advanced Functions	10

SPECIAL NOTE

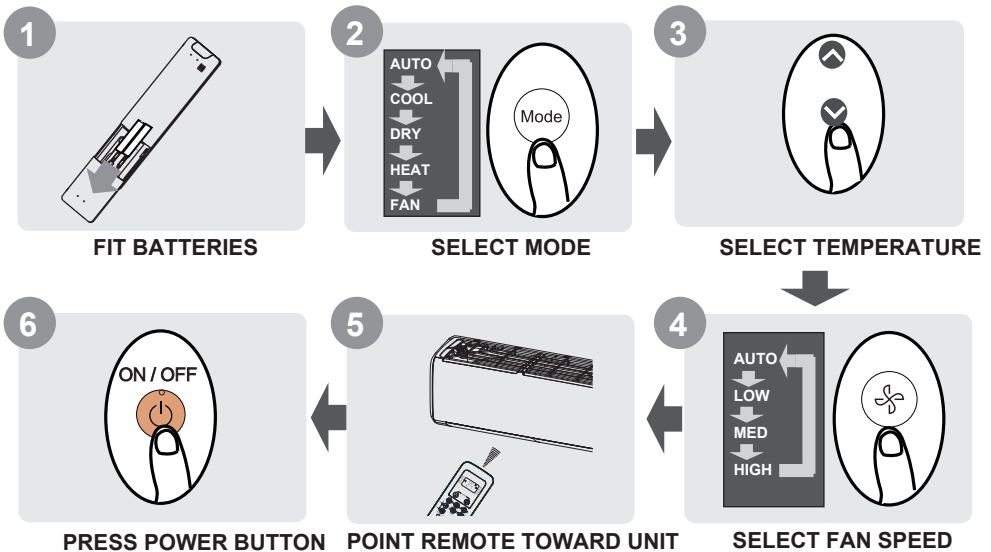
- Button designs on your unit maybe slightly different from the example shown.
- If the indoor unit does not equipped with a specific function, the pressing of relative funtion icon could not be functioned.
- Any variation between “Remote Controller User Manual” and “USER’S MANUAL” on function description, the description of “USER’S MANUAL” shall prevail.

Remote Controller Specifications

Model	RG10B(F)/BGEF, RG10B(F1)/BGEFU1, RG10B1(F)/BGEF, RG10B2(F)/BGCEF, RG10B10(F)/BGEF, RG10B(H)/BGEF, RG10B(H1)/BGEFU1, RG10B1(H)/BGEF, RG10B2(H)/BGCEF, RG10B10(H)/BGEF, RG10B(G)/BGEF, RG10B(G1)/BGEFU1, RG10B1(G)/BGEF, RG10B2(G)/BGCEF, RG10B10(G)/BGEF, RG10Y1(F)/BGEF, RG10Y1(H)/BGEF, RG10Y1(G)/BGEF
Rated Voltage	3.0V(Dry batteries R03/LR03×2)
Signal Receiving Range	8m
Environment	-5°C~60°C(23°F~140°F)

NOTE: For model of RG10Y1(F/H/G)/BGEF, if the unit is turned off under COOL, AUTO or DRY mode with the set temperature less than 24°C, the set temperature will be automatically set to 24°C when you turn on the unit again. If the unit is turned off under HEAT mode with the set temperature more than 24°C, the set temperature will be automatically set to 24°C when you turn on the unit again.

Quick Start Guide



NOT SURE WHAT EACH FUNCTION MEANS?

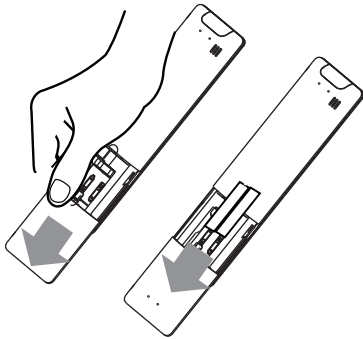
Refer to **How to Use Basic Functions** and **How to Use Advanced Functions** sections of this manual for detailed description.

Handling the Remote Controller

Inserting and Replacing Batteries

Your air conditioning unit may come with two batteries(some styles). Put the batteries in the remote control before use.

1. Slide the back cover from the remote control downward, exposing the battery compartment.
2. Insert the batteries, paying attention to match up the (+) and (-) ends of the batteries with the symbols inside the battery compartment.
3. Slide the battery cover back in place.



! BATTERY NOTES

To optimize product performance:

- Do not mix old and new batteries or batteries of different types.
- Do not leave batteries in the remote control if you don't plan to use the device for more than 2 months.



BATTERY DISPOSAL

Do not dispose batteries as unsorted municipal waste. Refer to local laws for proper disposal of batteries.

TIPS FOR USING REMOTE CONTROL

- The remote control must be used within 8 meters of the unit.
- The unit will beep when remote signal is received.
- Curtains, other materials and direct sunlight can interfere with the infrared signal receiver.

NOTES FOR USING REMOTE CONTROL

The device could comply with the local national regulations.

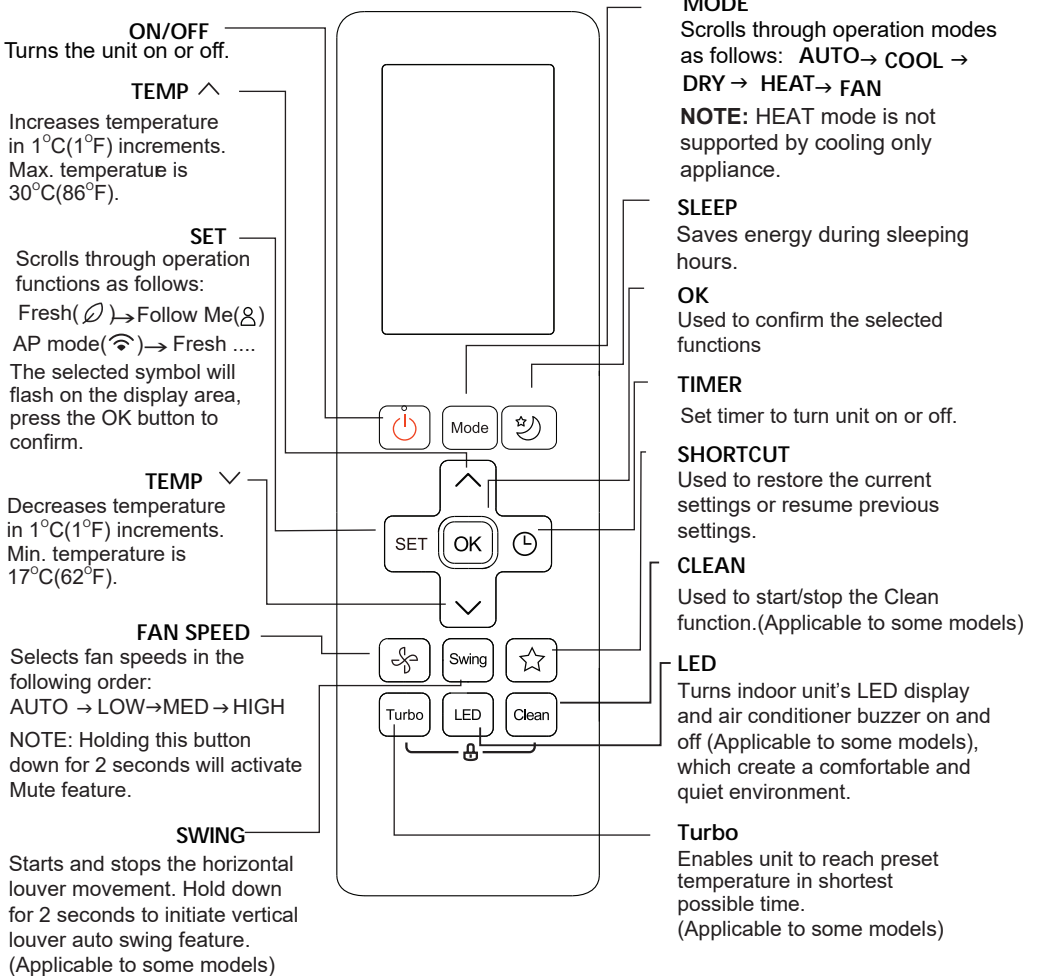
- In Canada, it should comply with CAN ICES-3(B)/NMB-3(B).
- In USA, this device complies with part 15 of the FCC Rules. Operation is subject to the following two conditions:
 - (1) This device may not cause harmful interference, and
 - (2) this device must accept any interference received, including interference that may cause undesired operation.

This equipment has been tested and found to comply with the limits for a Class B digital device, pursuant to part 15 of the FCC Rules. These limits are designed to provide reasonable protection against harmful interference in a residential installation. This equipment generates, uses and can radiate radio frequency energy and, if not installed and used in accordance with the instructions, may cause harmful interference to radio communications. However, there is no guarantee that interference will not occur in a particular installation. If this equipment does cause harmful interference to radio or television reception, which can be determined by turning the equipment off and on, the user is encouraged to try to correct the interference by one or more of the following measures:

- Reorient or relocate the receiving antenna.
- Increase the distance between the equipment and receiver.
- Connect the equipment into an outlet on a circuit different from that to which the receiver is connected.
- Consult the dealer or an experienced radio/TV technician for help.
- Changes or modifications not approved by the party responsible for compliance could void user's authority to operate the equipment.

Buttons and Functions

Before using your new air conditioner, make sure to familiarize yourself with its remote control. The following is a brief introduction to the remote control. For instructions on how to operate your air conditioner, refer to the **How to Use Basic Functions** section of this manual.



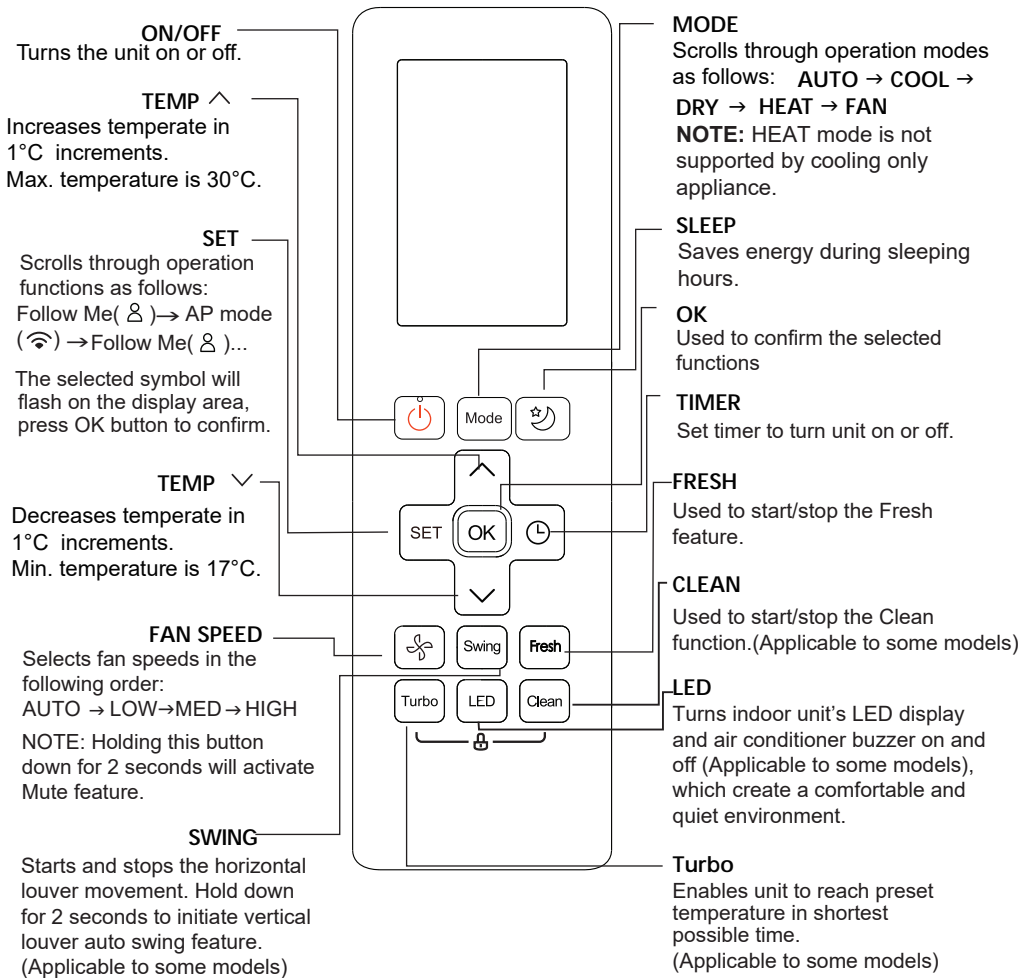
Model: **RG10B(F/H/G)/BGEF & RG10B(F1/H1/G1)/BGEFU1, RG10Y1(F/H/G)/BGEF**

(Fresh feature is not available)

RG10B10(F/H/G)/BGEF(20-28°C)

RG10B2(F/H/G)/BGCEF(Cooling only model, AUTO mode and HEAT mode are not available)

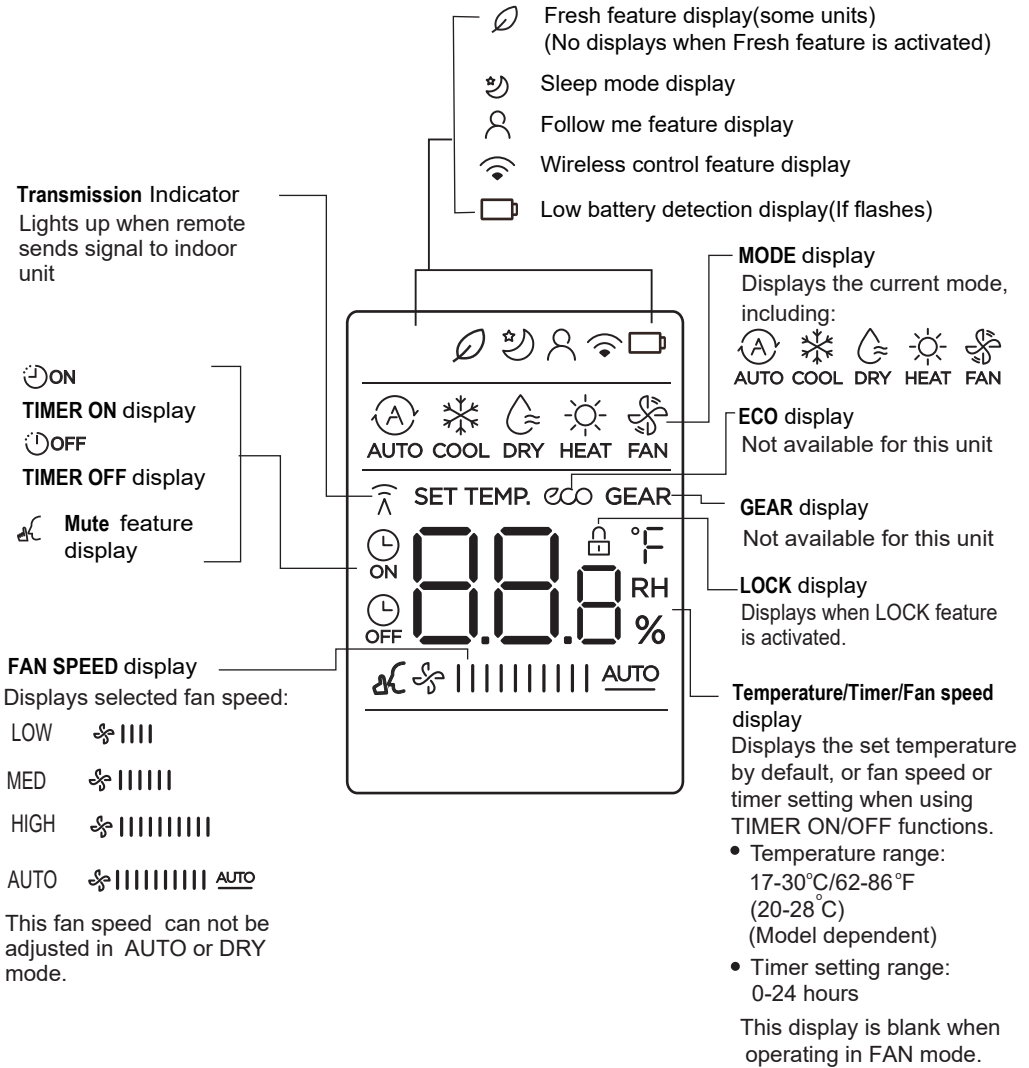
NOTE: For model of **RG10B(F1/H1/G1)/BGEFU1**, press together ^ & v buttons at the same time for 3 seconds will alternate the temperature display between the °C & °F scale.



Model: RG10B1(F/H/G)/BGEF

Remote Controller Screen Indicators

Information are displayed when the remote controller is power up.



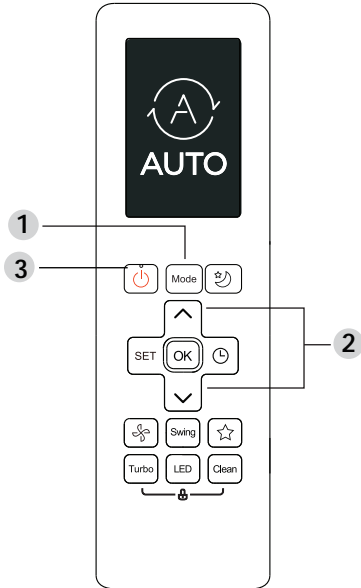
Note:

All indicators shown in the figure are for the purpose of clearer explanation. During the actual operation, only relative function signs are shown on the display window.

How to Use Basic Functions

Basic operation

ATTENTION! Before operation, please ensure the unit is plugged in and power is available.



TEMPERATURE SETTING

The operating temperature range for units is 17-30°C (62-86°F)/20-28°C.

You can increase or decrease the set temperature in 1°C (1°F) increments.

AUTO Mode

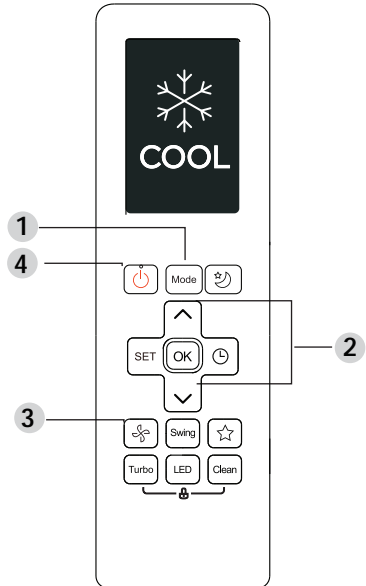
In AUTO mode, the unit will automatically select the COOL, FAN, or HEAT operation based on the set temperature.

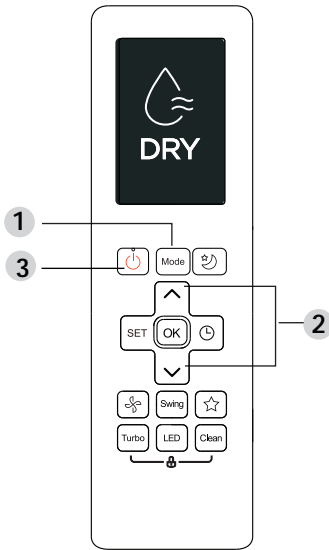
1. Press the **MODE** button to select **AUTO**.
2. Set your desired temperature using the **TEMP** ^ or **TEMP** ∨ button.
3. Press the **ON/OFF** button to start the unit.

NOTE: FAN SPEED can't be set in AUTO mode.

COOL Mode

1. Press the **MODE** button to select **COOL** mode.
2. Set your desired temperature using the **TEMP** ^ or **TEMP** ∨ button.
3. Press **FAN** button to select the fan speed: AUTO, LOW, MED or HIGH.
4. Press the **ON/OFF** button to start the unit.





DRY Mode (dehumidifying)

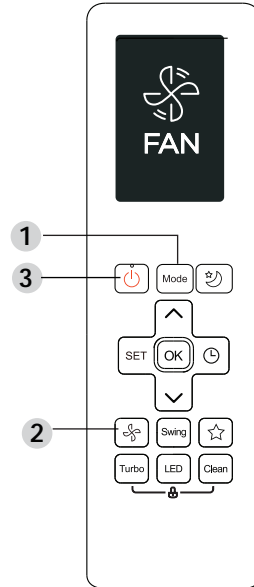
1. Press the **MODE** button to select **DRY**.
2. Set your desired temperature using the **TEMP** ^ or **TEMP** v button.
3. Press the **ON/OFF** button to start the unit.

NOTE:FAN SPEED cannot be changed in DRY mode.

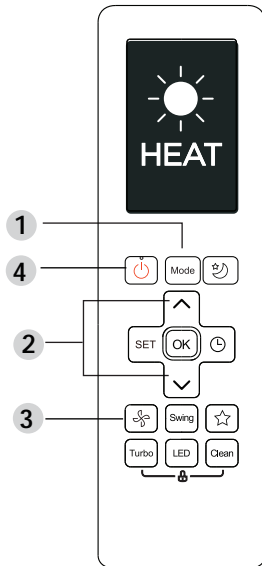
FAN Mode

1. Press the **MODE** button to select **FAN** mode.
2. Press **FAN** button to select the fan speed: AUTO, LOW, MED or HIGH.
3. Press the **ON/OFF** button to start the unit.

NOTE:You can't set temperature in FAN mode. As a result, your remote control's LCD screen will not display temperature.



HEAT Mode



1. Press the **MODE** button to select **HEAT** mode.
2. Set your desired temperature using the **TEMP** ^ or **TEMP** v button.
3. Press **FAN** button to select the fan speed: AUTO, LOW, MED or HIGH.
4. Press the **ON/OFF** button to start the unit.

NOTE: As outdoor temperature drops, the performance of your unit's HEAT function may be affected. Under this circumstances, we recommend using this air conditioner in conjunction with other heating appliances.

Setting the TIMER

Set the duration after which the unit will automatically turn on/off.

TIMER ON setting

Press TIMER button to initiate the ON time sequence.



Press Temp. up or down button for multiple times to set the desired time to turn on the unit.

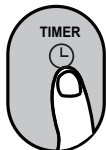


Point remote to unit and wait 1sec, the TIMER ON will be activated.



TIMER OFF setting

Press TIMER button to initiate the OFF time sequence.



Press Temp. up or down button for multiple times to set the desired time to turn off the unit.



Point remote to unit and wait 1sec, the TIMER OFF will be activated.

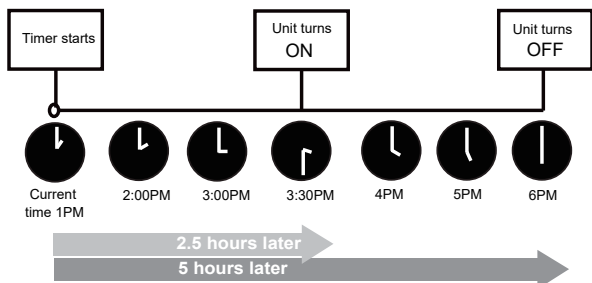
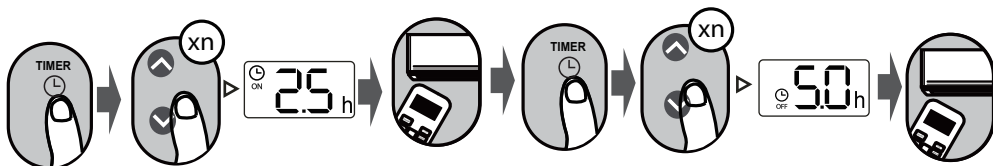


NOTE:

1. When setting the TIMER ON or TIMER OFF, the time will increase by 30 minutes increments with each press, up to 10 hours. After 10 hours and up to 24, it will increase in 1 hour increments. (For example, press 5 times to get 2.5h, and press 10 times to get 5h.) The timer will revert to 0.0 after 24.
2. Cancel either function by setting its timer to 0.0h.

TIMER ON & OFF setting(example)

Keep in mind that the time periods you set for both functions refer to hours after the current time.

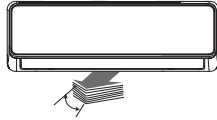


Example: If current timer is 1:00PM, to set the timer as above steps, the unit will turn on 2.5h later (3:30PM) and turn off at 6:00PM.

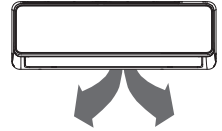
How to Use Advanced Functions

Swing function

Press Swing button



The horizontal louver will swing up and down automatically when pressing Swing button. Press again to make it stop.



Keep pressing this button more than 2 seconds, the vertical louver swing function is activated. (Depends on the model you have purchased)

SHORTCUT function

Press SHORTCUT button



Press this button when remote controller is on, the system will automatically revert back to the previous settings including operating mode, setting temperature, fan speed level and sleep feature (if activated).

If pressing more than 2 seconds, the system will automatically restore the current operation settings including operating mode, setting temperature, fan speed level and sleep feature (if activated).

TURBO Function

Press TURBO button



When you select Turbo feature in COOL mode, the unit will blow cool air with strongest wind setting to jump-start the cooling process.

When you select Turbo feature in HEAT mode, for units with Electric heat elements, the Electric HEATER will activate and jump-start the heating process.

Clean Function

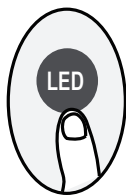
Press CLEAN button



Airborne bacteria can grow in the moisture that condenses around heat exchanger in the unit. With regular use, most of this moisture is evaporated from the unit. By pressing the CLEAN button, your unit will clean automatically. After cleaning, the unit will turn off automatically. Pressing the CLEAN button mid-cycle will cancel the operation and turn off the unit. You can use CLEAN as often as you like.

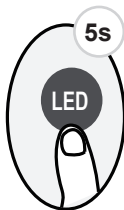
Note: You can only activate this function in COOL or DRY mode.

LED DISPLAY



Press LED button

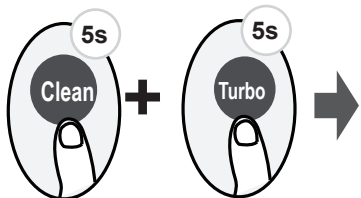
Press this button to turn on and turn off the display on the indoor unit.



Press this button for more than 5 seconds(some units)

Keep pressing this button more than 5 seconds, the indoor unit will display the actual room temperature. Press more than 5 seconds again will revert back to display the setting temperature.

LOCK function



Press together **Clean** button and **Turbo** button at the same time more than 5 seconds to activate Lock function. All buttons will not response except pressing these two buttons for two seconds again to disable locking.

Silence function



Keep pressing Fan button for more than 2 seconds to activate/disable Silence function(some units).

Due to low frequency operation of compressor, it may result in insufficient cooling and heating capacity. Press ON/OFF, Mode, Sleep, Turbo or Clean button while operating will cancel silence function.

FP function

Press this button 2 times during one second under HEAT Mode and setting temperature of 17°C/62°F or 20°C(for model of RG10B10(F/H/G)/BGEF).



The unit will operate at high fan speed (while compressor on) with temperature automatically set to 8°C/46°F.

Note: This function is for heat pump air conditioner only.

Press this button 2 times during one second under HEAT Mode and setting temperature of 17°C/62°F or 20°C(for model RG10B10(F/H/G)/BGEF) to activate FP function.Press On/Off, Sleep, Mode, Fan and Temp. button while operating will cancel this function.

SLEEP Function

Press SLEEP button

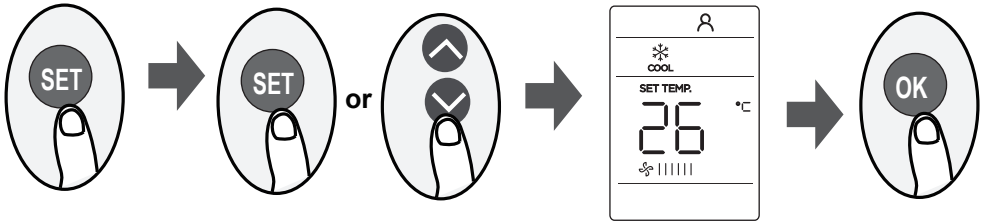


The SLEEP function is used to decrease energy while you sleep (and don't need the same temperature settings to stay comfortable). This function can only be activated via remote control.

For the details, please see "sleep operation" in "USER'S MANUAL".

Note: The SLEEP function is not available in FAN or DRY mode.

SET function



- Press the SET button to enter the function setting, then press SET button or TEMP \downarrow or TEMP \uparrow button to select the desired function. The selected symbol will flash on the display area, press the OK button to confirm.
- To cancel the selected function, just perform the same procedures as above.
- Press the SET button to scroll through operation functions as follows:
Fresh*(\emptyset) \rightarrow Follow Me(R) \rightarrow AP mode(Wi)
[*]: If your remote controller has Fresh button, you can not use the SET button to select Fresh feature.

FRESH function(\emptyset) (some units) :

When the FRESH function is initiated, the Ionizer/Plasma Dust Collector (depending on models) is energized and will help to remove pollen and impurities from the air

Follow me function(R) :

The FOLLOW ME function enables the remote control to measure the temperature at its current location and send this signal to the air conditioner every 3 minutes interval. When using AUTO, COOL or HEAT modes, measuring ambient temperature from the remote control (instead of from the indoor unit itself) will enable the air conditioner to optimize the temperature around you and ensure maximum comfort.

NOTE: Press and hold Turbo button for seven seconds to start/stop memory feature of Follow Me function.

- If the memory feature is activated, "ON" displays for 3 seconds on the screen.
- If the memory feature is stopped, "OFF" displays for 3 seconds on the screen.
- While the memory feature is activated, press the ON/OFF button, mode shifting or power cut will not cancel the Follow Me function.

AP function(Wi) (some units) :

Choose AP mode to do wireless network configuration. For some units, it doesn't work by pressing the SET button. To enter the AP mode, continuously press the LED button seven times in 10 seconds.

The design and specifications are subject to change without prior notice in case of product improvement. Consult your sales agency or manufacturer for details.

CR255-RG10B(F)